

Journal section: Community and Preventive Dentistry
 Publication Types: Review

doi:10.4317/jced.52301
<http://dx.doi.org/10.4317/jced.52301>

Dentist attitudes and responsibilities concerning child sexual abuse. A review and a case report

Arturo Garrocho-Rangel¹, Raúl Márquez-Preciado², Ana-Isabel Olguín-Vivar³, Socorro Ruiz-Rodríguez², Amaury Pozos-Guillén¹

¹ DDS, MS, PhD, Associate Professor, Pediatric Dentistry Postgraduated Program, Faculty of Dentistry, San Luis Potosi University, San Luis Potosí, SLP México

² DDS, MS, Associate Professor, Pediatric Dentistry Postgraduated Program, Faculty of Dentistry, San Luis Potosi University, San Luis Potosí, SLP México

³ Undergraduate Student, Faculty of Dentistry, San Luis Potosi University, San Luis Potosí, SLP México

Correspondence:
 Faculty of Dentistry
 San Luis Potosi University
 SLP, Mexico
 Av. Dr. Manuel Nava #2
 Zona Universitaria
 C.P.78290
 San Luis Potosí, SLP. Mexico
apozos@uaslp.mx

Garrocho-Rangel A, Márquez-Preciado R, Olguín-Vivar AI, Ruiz-Rodríguez S, Pozos-Guillén A. Dentist attitudes and responsibilities concerning child sexual abuse. A review and a case report. J Clin Exp Dent. 2015;7(3):e428-34.
<http://www.medicinaoral.com/odo/volumenes/v7i3/jcedv7i3p428.pdf>

Article Number: 52301 <http://www.medicinaoral.com/odo/indice.htm>
 © Medicina Oral S. L. C.I.F. B 96689336 - eISSN: 1989-5488
 eMail: jced@jced.es
Indexed in:
 Pubmed
 Pubmed Central® (PMC)
 Scopus
 DOI® System

Received: 10/01/2015
 Accepted: 31/03/2015

Abstract

According to the World Health Organization, child abuse and neglect is “every kind of physical, sexual, emotional abuse, neglect or negligent treatment, commercial or other exploitation resulting in actual or potential harm to the child’s health, survival, development or dignity in the context of a relationship of responsibility, trust or power”. The aim of the present report is to inform about the most relevant aspects of child abuse and the characteristics of injuries to the head, neck, and orofacial regions, in addition to the suggested role of, and management by, the dentist for the evaluation of this condition, and also for reporting a case of a physically and sexually abused girl aged 5 years 8 months. Throughout the appointments, some type of abuse in this patient was suspected by the treating dentists at the clinic, mainly due to the initial behavior exhibited by the patient in the dental chair. Based on the clinical diagnostic an intensive preventive plan and restorative treatment was realized.

The timely detection of the signs and symptoms of sexual abuse, often present in the orofacial region, place the pediatric dentist in a strategic situation, with the capacity to recognize, register, and later report those cases considered as suspect, including the dental treatment delivered and the intensive behavioral-psychological management, in order to achieve acceptance by the otherwise very anxious patient of the indicated restorative and preventive dental procedures.

Key words: Child abuse, dentistry, behavior management.

Introduction

Child abuse, maltreatment, or violence represents a serious violation of the child’s basic rights and is currently considered a significant international public health problem with high prevalence among all socioeconomic,

educational, ethnic, religious, and professional strata, with alarming levels of morbidity and mortality (1-3). Child abuse is defined as a persistent action of commission by a parent or parents, family members, or caregivers, which results in actual or potential harm to a

child's or adolescent's health, development, or dignity (4,5). Some factors related with typical child abuse include financial stress, family separation, illness, substance abuse, unemployment, and overcrowded housing; perpetrators of abuse are usually relatively young (often <25 years of age) and of normal intellect (1,5); likewise, Munchausen syndrome, consisting of deliberately fabricating, inducing, or exaggerating an illness (more frequently by the mother), has also been reported (6,7). Child abuse is considered a serious concern that has gained increasing attention among pediatricians, pediatric dentists, and other health professionals. Therefore, in recent years, many countries have implemented comprehensive legislation, policies, and procedures with the purposes of protecting and safeguarding children from any type of abuse (2,8-10). According to the definition, four types of child abuse may be recognized: physical violence; sexual abuse; emotional abuse, and neglect (11-13).

Otherwise, physical violence may be classified as follows: mild (few ecchymoses and abrasions); moderate (moderate ecchymoses, burns, and a single bone fracture), and severe (large burns, multiple bone fractures, and other life-threatening injuries) (12). Consequently, abuse may make child feel worthless, seriously interfere with health, normal social, psychological development, well-being, or cause permanent emotional scars (13).

The prevalence of child abuse has been reported in several countries and reflects multifactorial social and cultural differences (3,10,14). It is more widespread than any other health problem in the world; in the U.S., around 47 of every 1,000 children are suspected victims of maltreatment (1,5) and >1,000 child fatalities in 1 year associated with abuse have been reported, whereas in Europe and Latin America, its prevalence ranges from 5–30 cases per 1,000 children annually, depending on the social background (15). However, only 1% of cases of child abuse and neglect are reported by dentists, according to some authors (9,16). Other relevant epidemiological data on child abuse in dentistry are summarized in table 1 (7,17-22).

There are certain, possible general warnings and signs of child abuse, which are depicted in table 2. On the other hand, the majority of authors note that the head, face, and oral cavity are the central focuses for physical abuse, due to that these areas are exposed and accessible, because of their significance in nutrition and communication, and that they are representative of the whole being or self (11,12). Thus, craniofacial, head, face, and neck injuries occur in 50-75% of all cases of physical child abuse, which may be associated with other injuries elsewhere on the child's body (23); however, Jenny *et al.* (24) revealed that 31% of infants and young children with abusive craniofacial trauma were initially misdiagnosed. Therefore, a careful and thorough intraoral and

perioral assessment is always required in all cases of suspected abuse (25-27). Accidental injuries to the oral cavity, face, and head must be distinguished from those caused by abuse, by establishing whether the history, timing, and mechanism of the injury is consistent with the injury type and child's developmental capabilities (26,28). Oral injuries may be inflicted with instruments such as bottles or eating utensils during forced feeding, by hands, fingers, belts, scalding liquids, or caustic substances, or as result of continuous behavior patterns such as whipping, biting, or severe shaking (27,29). This type of physical abuse may result in contusions, bruises, or soft tissue lacerations, most commonly on the lips, followed by the cheeks, buccal mucosa, soft and hard palate, gingivae, alveolar mucosa, and maxillary labial frenum; additionally, discolored, fractured, displaced (with pulp compromise), or avulsed teeth, facial bones, or jaw fractures are also frequent (27,30-32).

Regarding child sexual abuse, although the mouth is a frequent site for this abuse type, visible oral injuries or infections are considered rare (12,23). When oro-genital contact is suspected, as in cases of oral/perioral gonorrhea or human papillomavirus warts, referral to a specialized and well-equipped clinic setting is recommended in order to conduct comprehensive examinations (according to the AAPD, oral gonorrhea in prepubertal children is pathognomonic of sexual abuse) (10,12,33). However, other related infections may also produce oral warts. Similarly, unexplained injury or petechiae on the palate, particularly at the junction of the hard and soft palates, may be evidence of forced oral sex (27,34,35). Bite marks with ecchymoses, abrasions, or lacerations in an ovoid pattern may be also related with physical or sexual abuse (33,36,37).

Case Report

This report describes a case of a physically and sexually abused girl aged 5 years 8 months, including the detection process and the dental treatment delivered, carried out under intensive behavioral-psychological management, in order to reach acceptance of the indicated clinical procedures by the affected patient. In October 2013, a girl aged 5 years 8 months was brought by her maternal aunt, who was also her legal guardian, to the Pediatric Dental Clinic at the Faculty of Dentistry, requesting dental evaluation and treatment, although with no complaint of pain by the patient. Based on her family history, the girl was the last-born among three siblings (she and two adolescent half-brothers) from a single mother, and attended a local preschool; medically, the patient had no adverse past history and exhibited neither systemic disease nor relevant growth and development problems. However, the girl was receiving psychological therapy at the time, and a maternal history of alcoholism and substance abuse was reported. She had not received pre-

Table 1. Some significant epidemiological data.

Author(s)	Main findings
Allareddy <i>et al.</i> (17)	Hospital-based retrospective study (2008–2010); nearly 17,000 hospital emergency room visits due to child abuse, most frequently in young children; 30.7% required hospitalization; >45% of perpetrators were a partner of the child’s parent; Sexual abuse occurred in 1.3% and death in 1.45% of cases
Bentley and Widom (18)	Prospective cohort, 30-year follow-up (1967–1971 to 2003–2004), 410 abused children matched with 303 non- abused children Adults abused in childhood showed significantly higher Body mass index (BMI) scores Adults who suffered child neglect did not show different BMI scores
Cavalcanti (19)	Prevalence of injuries in children and adolescent who were victims of physical violence in the school environment (2003–2006) 61.9% males, 13–17 years of age, 92.9% of perpetrators were friends, 7.1% were teachers 23.8% of victims presented injuries in the oral cavity, all in soft tissues, mainly on the lips
Crespo <i>et al.</i> (20)	In the U.S., >1 million cases of child abuse or neglect annually Main types of abuse: Negligence (36.2%), exposure to inappropriate behavior models (17.4%), emotional/psychological abuse (14%), and school dropout (14%)
Hinchliffe (7)	Child deaths as a result of abuse/maltreatment per year. In England and Wales, approximately 100 In the U.S., deaths reached >1,700 in 2007
Kacker and Moshin (21)	India: 12,447 children 69% reported physical abuse. Boys (54.7%), 88.6% abused by parents, 5.65% at school (corporal punishment by teachers)
Montecchi <i>et al.</i> (22)	Association of dental neglect with child abuse and other types of neglect. Abused children showed significantly higher dental plaque index, higher number of untreated decays, higher gingival inflammation, more evidences of neglect, and less cooperative behavior during dental visits

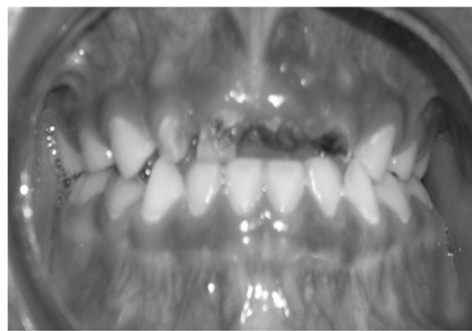
vious dental care. According to her legal guardian, the girl exhibited an abnormal habit of introducing objects to her mouth. In addition, an introverted, silent, and fearful attitude was initially noted. Extraoral examination showed no evidence of skin injuries or lacerations, facial asymmetry, or temporoman-

dibular joint abnormalities. It is noteworthy that girl’s legal guardian did not allow the taking of extraoral photographs. Intraoral examination (Fig. 1) was difficult due to the great anxiety exhibited by the patient; the most important intraoral findings were the following: complete primary dentition with several asymptomatic,

Table 2. Possible general warning signs of child abuse (taken and adapted from: Hinchliffe J, 2011).

Injury not consistent with explanation given, or with age and stage of development of the child
Multiple injuries at various stages of healing
Trauma to non-exposed sites of the body
Evidence of previous bone fractures
Clustered or bilateral bruising
Bites or belt marks
Significant delay in seeking care
Inappropriate child-parent interaction
Consistently poor hygiene
Disclosure by the child or another person.

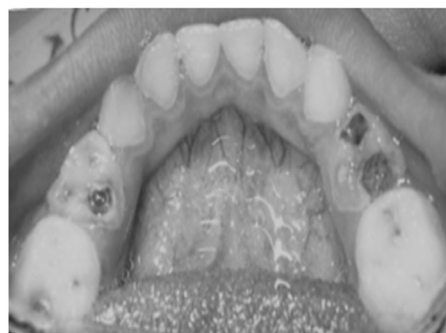
Based on the clinical diagnostic data and considering the patient’s great anxiety and reluctance, we decided to begin with an intensive preventive plan; then, a restorative treatment was attempted, but the child was unable to exhibit acceptable behavior (considered as Frankl Behavior Rating scale II); thus, we were required to implement diverse psychological approach techniques, such as progressive desensitization, tell-show-do, positive reinforcement, voice modulation, and gifting, among others, but aversive methods such as hand over mouth were never applied. Fortunately, these procedures paid off, and the patient’s cooperation with and attitude toward the dental environment improved noticeably. Her anxiety was reduced to a great degree over the following appointments, to the extent that the following planned restorative treatment could be successfully performed: 2 pit and fissure sealants (on both upper-left molars); 3 composite fillings (upper-right second molar and both lower second molars); 2 pulpomies with their corresponding preformed crowns (upper-right first molar and lower-left first molar), 1 pulpectomy with its preformed crown (lower-right first molar), and 4 upper incisor ex-



a



b



c

Fig. 1. a) Frontal intraoral view; b) Intraoral view of maxillary arch; c) Intraoral view of mandibular arch.

deep carious cavities in the majority of her teeth, mainly in her four upper incisors, first molars (except for the upper left one), and the lower-left second molar, a condition diagnosed as early childhood caries, and as Tinanoff dental caries risk scale 5 (38). The patient also exhibited a poor oral hygiene status, manifested by heavy plaque deposits on both anterior tooth surfaces and tongue.

tractions. Later, an upper anterior fixed esthetic prosthesis was put in place. The final patient’s attitude was rated as excellent. Likewise, oral hygiene and nutritional strategies were provided and reinforced during the dental appointments. A non-cariogenic diet lacking fruits, juices, and other soft drinks, or animal proteins, was recommended. Throughout the appointments, some type of abuse in this

patient was suspected by the treating dentists at the clinic, mainly due to the initial behavior exhibited by the patient in the dental chair during certain situations. For example, we noted that, when a male adult approached the dental chair, the patient became visibly nervous and whispered things to us, such as: "Be careful. Men are dangerous". Additionally, she was often found staring and retracted; also, when rubber dam isolation was set in place, her eyes exhibited mild tears, although she denied any pain. After deeper and careful inquiry, the patient's aunt finally revealed that her the aunt' nephew had, several months previously, genitally and orally sexually abused the patient repeatedly, while her mouth was covered with the hands of her two adolescent half-brothers. She also referred that the neighbors often heard her screaming; bruises and other physical maltreatment were some of the signs noticed. This situation was previously reported to the Mexican Government Child Protective Services, custody of the child was soon legally awarded to her maternal aunt, and a psychological approach was immediately initiated.

Shortly after finishing the dental treatment, the girl immediately moved to a nearby city because of related legal issues and repeated threats by other family members. Therefore, we were not able to see the patient for the termination appointments. Unfortunately, because of this, we could neither provide our final recommendations nor take postoperative intraoral photographs. However, we were very satisfied and pleased with the outcomes obtained, in all aspects, and always acted by means of the most humane manner possible.

Discussion

Every child worldwide has the right of a loving environment and deserves a life free from violence, and child protection is the duty of every member of the society (10,15). However, millions of children around the world are victims of and/or witness to physical, sexual, and emotional violence (4,5). As previously mentioned, the majority of the lesions reported due to child abuse involve the mouth, craniofacial regions, and neck. Therefore, pediatric dentists are in an exceptionally favorable position to recognize child abuse. Although parents who abuse their children tend to change their child's physician frequently, they are more likely to continue visiting their child's dentist (26). Additionally, pediatric dentists have regular contact and a relationship with the children and families; thus, they can observe the psychological condition of the patients and their family environment (7,12). Additionally, orofacial trauma in children commonly presents at pediatric dentists' offices; thus, these dentists can identify signs of possible child physical or sexual abuse. Therefore, they should be able to recognize these signs and take the responsibility to inform themselves community procedures for child protection

(8,9,14). However, many dental health professionals often under-report child abuse, mainly due to fear, lack of knowledge, and training, although their potential role in detecting this crime is growing (4,17).

Pediatric dentists or general dentists who are likely to treat children should be involved in aiding in the prevention of child physical or sexual abuse. Thus, they must be further trained to recognize and register some of the more common oral or perioral manifestations of this abuse, and then report any suspicion of abuse (5,7). Knowing about familial and environmental contexts where the child is growing up can lead to working out a more effective preventive effort in order to protect these vulnerable children (3,9).

Whenever suspicions of physical or child sexual maltreatment arise, a routine protocol should be followed (23). It is essential to elaborate a thorough and detailed clinical history, preferably directly from the child, that accurately documents all possible relevant explanations from parents or caregivers in a careful and prudent manner, in an attempt to contrast all of this information against the clinical findings, in order to find the truth regarding unusual oral, perioral, or behavioral manifestations (5,15,33). In cases in which sexual abuse is suspected, as in the case reported here, careful inquiry is also suggested. Thus, the dentist should question the child and the parent separately with regard to what caused any observed injury, and must also take into consideration the his/her own attitude toward a situation involving these features and provide a quiet, safe, and comfortable environment in the dental office (7,12). In many cases, the caregiver fails to provide the dentist with this information at the patient's initial appointments, perhaps due to shame, ignorance, or self-protection: the sexual perpetrator is usually one or more close relatives, and other relatives could act as tolerating, overlapping, and even covering up the fact. Therefore, the information supplied may be purposely biased. In the present case, the legal guardian did not inform us about the patient's sexual abuse because she considered that it was not relevant.

Multiple injuries or injuries at different healing stages, or a discrepant history should arouse the suspicion of physical and sexual abuse (23). Also, it is important to observe the parent (or caregiver)-child relationship, as well as the changes in the child's behavior; a parent may bring a child to the dentist to have loose or broken teeth treated, but may not seek treatment for other types of injuries (7,33). All suspected events should be reported to the corresponding government services for investigation, specialized laboratory testing for semen or foreign material (only in recent cases), and for specialized multidisciplinary management (12). If the patient's age permits it, careful direct questions may be asked, but always in the presence of witnesses, such as staff members, a social worker, or the guardian. X-rays, photographs, and

impressions of the anatomical structures involved must be taken, when necessary (13). Likewise, some oral or perioral injuries can sometimes be confirmed by laboratory findings, which could provide the timing or nature of these injuries, as well as the identity of the perpetrator (5,27).

If doubt exists concerning whether to report or not the suspected case, consultation with the patient's physician, a social worker, or with the local government authorities is recommended (9). On the other hand, when treating these children, all of dentist's knowledge, skill, and experience must be applied in order to obtain as much cooperation as possible from the patient, by means of employing the diverse pharmacological or non-pharmacological behavior management approaches available, such as those employed in the present case, always attempting to avoid those considered as aversive, and taking into consideration the high level of anxiety or fear often exhibited by abused children (1,26,29). With respect to our patient, we suppose that the placement of rubber dam isolation caused the girl to feel threatened because the rubber dam covered her mouth, resembling the hand(s) held over her mouth while she underwent sexual abuse (12).

Child maltreatment or violence is, in the majority of cases, a traumatic experience that causes a variety of cognitive, behavioral, and emotional responses, including anxiety and depression, sleep disorders, fear, difficulties in concentration, low self-esteem, propensity to suicide, addictive habits, lack of sphincter control, and even suicide, among others (7,13). All of these health and social problems may persist into adulthood (4,8). Thus, multidisciplinary professional and legal management and long-term follow-up of cases of child abuse is strongly recommended (23).

Under these circumstances, dental health personnel are encouraged to consult the expanding body of literature on the subject of child abuse, to increase their understanding of the nature and prevalence of violence toward or maltreatment of children in its different forms (1,13). The protection of a mistreated child must be our main concern. Dentists have a great opportunity to take a proactive role in helping these victims.

All over the world, adequate qualification of dentistry professionals is essential for proper clinical and behavioral management of orofacial injuries or emotional damage resulting from any type of child maltreatment. All dentists should learn and assume, as professional obligations, the identification, as early as possible, of the signs or symptoms characteristic of child abuse and neglect when confronted with a suspected case, and must become fully aware of the appropriate registration and reporting procedures. Such efforts could increase our ability to protect and care for our patients, who are often incapable of self-protection.

Conclusions

It is necessary for dentists to collaborate among themselves to increase the prevention, detection, and treatment of this condition and the urgent adoption of protective measures for the victim, as well as adequate follow-up in each case, in order to avoid the recurrence of physical or sexual abuse in unfortunate and/or defenseless children.

References

1. Tsang A, Sweet D. Detecting child abuse and neglect- Are dentists doing enough? *J Can Dent Assoc* 1999;65:387-91.
2. Carter YH, Bannon MJ, Limbert C, Docherly A, Barlow J. Improving child protection: a systematic review of training and procedural interventions. *Arch Dis Child* 2006;91:740-3.
3. Cavalcanti AL. Maxillofacial injuries in victims of violence at school environment. *Cien Saude Colet* 2009;14:1835-42.
4. Souza-Acevedo M, Leao M, Brito A, Possebon AP, Domingues J, Demarco FF, Dias-Torriani DD. Child maltreatment: a survey of dentists in southern Brazil. *Braz Oral Res* 2011;26:5-11.
5. Bathia SK, Maguire SA, Chadwick BL, Hunter ML, Harris JC, Tempest V, et al. Characteristics of child dental neglect: a systematic review. *J Dent* 2014;42:229-39.
6. Stirling J Jr, American Academy of Pediatrics Committee on Child Abuse and Neglect. Beyond Munchausen syndrome by proxy: identification and treatment of child abuse in a medical setting. *Pediatrics* 2007;119:126-30.
7. Hinchliffe J. Forensic Odontology, Part 5. *Br Dent J* 2011;210:423-8.
8. Harris JC, Elcock C, Sidebotham PD, Welbury RR. Safeguarding children in dentistry: 2. Do paediatric dentists neglect child dental neglect? *Br Dent J* 2009;206:465-70.
9. Katner DR, Brown CE. Mandatory reporting of oral injuries indicating possible child abuse. *J Am Dent Assoc* 2012;143:1087-92.
10. Cukovic-Bagic I, Welbury RR, Flander GB, Hatibovic-Kofman S, Nuzzolese E. Child protection: legal and ethical obligation regarding the report of child abuse in four different countries. *J Forensic Odontostomatol* 2013;31:15-21.
11. John V, Messer LB, Arora R, Fung S, Hatzis E, Nguyen T, et al. Child abuse and dentistry: a study of knowledge and attitudes among dentists in Victoria, Australia. *Aust Dent J* 1999;44:259-67.
12. Mathur S, Chopra R. Combating child abuse: the role of a dentist. *Oral Health Prev Dent* 2013;11:243-50.
13. Kemoli AM, Mavindu M. Child abuse: a classic case report with literature review. *Contemp Clin Dent* 2014;5:256-9.
14. Chadwick BL, Davies J, Bathia SK, Rooney C, McCusker N. Child protection: training and experiences of dental therapists. *Br Dent J* 2009;E6. DOI: 10.1038/sj.bdj.2009.666. [Epub ahead of print]
15. Keran Kumar SV, Noorani H, Shivprakash PK, Sinha S. Medical professional perception, attitude, knowledge, and experience about child abuse and neglect in Bagalkot district of north Karnataka: a survey report. *J Indian Soc Pedod Prevent Dent* 2011;29:193-7.
16. Bsoul AS, Flint DJ, Dove SB, Senn DR, Alder ME. Reporting of child abuse: a follow up survey of Texas dentists. *Pediatr Dent* 2003;25:541-5.
17. Allareddy V, Asad R, Kyeong-Lee M, Nalliah RP, Rampa S, Speicher DG, et al. Hospital based emergency department visits attributed to child physical abuse in United States: predictors of hospital mortality. *PLoS ONE* 2014;9:1-8.
18. Bentley T, Widom CS. A 30-year follow-up of the effects of child abuse and neglect on obesity in adulthood. *Obesity* 2009;17:1900-5.
19. Cavalcanti AL. Prevalence and characteristics of injuries to the head and orofacial region in physically abused children and adolescents- a retrospective study in a city of the Northeast of Brazil. *Dental Traumatol* 2010;26:149-53.
20. Crespo M, Andrade D, Alves A, Magalhães T. O papel do médico dentista no diagnóstico e sinalização do abuso de crianças. *Acta Med Port* 2011;24:939-48.

21. Kacker L, Moshin N. A study on child abuse in India, 2007. Ministry of Women and Child Development, Government. Referenced by Mathur S and Chopra R. Combating child abuse: the role of a dentist. *Oral Health Prev Dent* 2013;11:243-50.
22. Montecchi PP, Di Trani M, Sarzi Amadè D, Bufacchi C, Montecchi F, Polimeni A. The dentist's role in recognizing childhood abuses: study on the dental health of children victims of abuse and witnesses to violence. *Eur J Paediatr Dent* 2009;10:185-7.
23. Rayman S, Dincer E, Almas K. Child abuse. Concerns for health practitioners. *NY State Dent J* 2013;79:30-4.
24. Jenny C, Hymel KP, Ritzen A, Reinert SE, Hay TC. Analysis of missed cases of abusive head trauma. *J Am Med Assoc* 1999;281:621-6.
25. Kiran K. Child abuse and neglect. *J Ind Soc Pedod Prevent Dent* 2011;29:S79-82.
26. Sonbol HN, Abu-Ghazaleh S, Rajab LD, Baqain ZH, Saman R, Al-Bitar ZB. Knowledge, educational experiences and attitudes towards child abuse amongst Jordanian dentists. *Eur J Dent Educ* 2012;16:e158-65.
27. American Academy of Pediatric Dentistry. Guideline on oral and dental aspects of child abuse and neglect. American Academy of Pediatrics Committee on Child Abuse and Neglect; American Academy of Pediatric Dentistry; American Academy of Pediatric Dentistry Council on Clinical Affairs. 2008-2009;30:86-9.
28. Welbury RR, Murphy J. The dental practitioner's role in protecting children from abuse. 2. The orofacial signs of abuse. *Br Dent J* 1998;184:61-6.
29. Santos JF, Cavalcanti AL, Nunes KS, Silva EC. Primary identification of an abused child in dental office: a case report. *J Indian Soc Pedod Prevent Dent* 2007;25:191-3.
30. O'Neill JA Jr, Meacham WF, Griffin JP, Sawyers JL. Patterns of injury in the battered child syndrome. *J Trauma* 1973;13:332-9.
31. Becker DB, Needleman HI, Kotelchuck M. Child abuse and dentistry: orofacial trauma and its recognition by dentists. *J Am Dent Assoc* 1978;97:24-8.
32. da Fonseca MA, Feigal RJ, ten Bonsel RW. Dental aspects of 1248 cases of child maltreatment on file at a major county hospital. *Pediatr Dent* 1992;14:152-7.
33. Pinheiro Rdos S, de Franca TR, Ferreira Dde C, Ribeiro CM, Leão JC, Castro GF. Human papillomavirus in the oral cavity of children. *J Oral Pathol Med* 2011;40:121-6.
34. Folland DS, Burke RE, Hinman AR, Schaffner W. Gonorrhea in preadolescents children: an inquiry into source of infection and mode of transmission. *Pediatrics* 1977;60:153-6.
35. DeJong AR. Sexually transmitted diseases in sexually abused children. *Sex Transm Dis* 1986;13:123-6.
36. Wagner GN. Bitemark identification in child abuse cases. *Pediatr Dent* 1986;8:96-100.
37. Bell K. Identification and documentation of bite marks. *J Emerg Nurs* 2000;26:628-30.
38. Tinanoff N. Dental caries risk assessment and prevention. *Dent Clin North Am* 1995;39:709-19.