

Journal section: Oral Medicine and Pathology
Publication Types: Case Report

doi:10.4317/jced.54497
<http://dx.doi.org/10.4317/jced.54497>

Mucocele of the dorsal surface of the tongue: A case report

Savvas Titsinides ¹, Demos Kalyvas ², Konstantinos Tosios ¹

¹ Department of Oral Medicine and Pathology, Dental School, University of Athens, Greece

² Department of Oral and Maxillofacial Surgery, Dental School, University of Athens, Greece

Correspondence:
3, Argolidos Street, 11523, Athens
Greece
titsinidess@yahoo.com

Received: 03/11/2017
Accepted: 14/03/2018

Titsinides S, Kalyvas D, Tosios K. Mucocele of the dorsal surface of the tongue: A case report. J Clin Exp Dent. 2018;10(5):e495-8.
<http://www.medicinaoral.com/odo/volumenes/v10i5/jcedv10i5p495.pdf>

Article Number: 54497 <http://www.medicinaoral.com/odo/indice.htm>
© Medicina Oral S. L. C.I.F. B 96689336 - eISSN: 1989-5488
eMail: jced@jced.es
Indexed in:
Pubmed
Pubmed Central® (PMC)
Scopus
DOI® System

Abstract

Mucoceles represent one of the most common lesions of the oral cavity, developing as a result of saliva accumulation. The most frequent affected area is the lower lip, followed by floor of mouth, ventral tongue and buccal mucosa. Despite numerous reports of mucoceles originating on the ventral surface of the tongue, only scarce cases of such a lesion identified on the dorsal tongue surface have been described. In this report a mucocele developed on the dorsal tongue of a 74-year-old woman is described. Additionally a review of previously published mucoceles of the dorsal surface of the tongue is provided and discussed.

A 74-year-old female patient was referred for a painless swelling on the dorsal surface of the tongue of 1 month duration. Possible clinical diagnosis included granular cell tumor and lingual thyroid gland. Proper blood testing for TSH, T3 and T4 as well as ultrasonography were requested, found to be within normal limits. An excisional biopsy was performed and tumor was removed with no intra-operative complications.

Histopathological examination was consistent with a mucocele, exhibiting an amorphous material surrounded by granular connective tissue without epithelial lining on the periphery. Patient was examined on regular follow-up basis, with no signs of recurrence for the last 1 year.

Mucoceles of the dorsal tongue surface represent rare clinical entities, necessitating the need for further case reports to be published in order to widen our understanding of their clinical features.

Key words: Mucocele, oral cavity, tongue, minor salivary glands, oral and maxillofacial pathology.

Introduction

Mucoceles develop in the oral cavity as a result of saliva accumulation, causing swelling of the affected area. These entities represent one of the most common lesions of the oral mucosa while they are likely to grow at a lesser frequency in other parts of the human body such as the nasal cavity and maxillary sinus (1).

They are mostly subdivided into two categories: a. Mucus extravasation type; rupture of salivary glands' duct as a result of injury can lead to leakage and concentration of saliva in the surrounding tissues. In this way a cavity is formed within the soft tissues, not surrounded by epithelial wall lining, developing a pseudocyst, and b. Mucus retention type; obstruction of the salivary duct

leading to a true cyst covered by epithelium. About 90% of such lesions are classified as extravasation mucosal cysts while only 10% as mucous retention cysts (2).

The incidence of oral mucoceles is difficult to be estimated due to the fact that a large percentage of these lesions are not referred for histopathological examination.

It should be highlighted that mucoceles may develop at any age. Nevertheless, among the studies, a higher incidence of both the 2nd and the 3rd decade of life is reported with no sex predilection. Importantly, among the 2 subtypes, the mucous extravasation cyst occurs at younger ages compared to those from retention (3).

Mucous cysts, irrespective of their etiology, appear as soft, asymptomatic swellings with a color ranging from deep blue to the color of normal mucosa. A common finding is the relatively periodic disappearance and recurrence of the lesion as the cystic cavity is subjected to rupture and re-aggregation of saliva. Often after rupture mucoceles leave superficial painful ulcerations that heal within days (4).

The most frequent region of development is the lower lip, followed by floor of mouth, ventral tongue and buccal mucosa. It is expected that mucoceles are relatively not frequent in the upper lip, compared to the lower lip since the latter is more easily to be injured. Regarding the tongue, mucoceles are also observed on the anterior ventral surface of the tongue where the Blandin-Nuhn sero-mucous salivary glands exist. Also, in proximity to the lingual tonsils, the glands of Weber, exclusively mucous glands are identified. Finally in the periphery of circumvallate papillae and the base of the clefts between the foliate papillae the serous salivary glands of von Ebner are located (5).

Differential diagnosis of dorsal tongue swellings include lingual ectopic thyroid, thyroglossal duct cyst, dermoid/epidermoid cysts as well as granular cell tumor, lymphangiomas and hemangiomas. However, using ultrasonography or MRI as diagnostic aids, lymphangiomas, hemangiomas as well as dermoid/epidermoid cysts have a relatively distinct appearance, offering a way to differentiate them. Thyroglossal duct cysts are located at a relatively posterior area, usually at the tongue base, from the foramen cecum to the thyroid gland. Lingual ectopic thyroid gland is a rare developmental anomaly caused by lack of descent of all or part of the embryonic thyroid gland. Diagnostic exams for such a lesion include hormonal tests – TSH, T3 and T4 – as well as ultrasonography to evaluate its anatomic presence in the lower neck. Finally, regarding granular cell tumor its clinical aspects, especially elasticity on palpation is quite helpful to discriminate it from relatively soft lesions like a mucocele.

Despite numerous reports of mucoceles originating on the ventral surface of the tongue, there have been only scarce reports of such a cyst forming on the dorsal sur-

face. This article describes a mucous extravasation cyst developed on the dorsal tongue of a 74-year-old woman. Additionally a review of previously published mucoceles of the dorsal surface of the tongue is provided and discussed.

Case Report

A 74-year-old female patient was referred to the Department of Oral and Maxillofacial Surgery complaining for a painless swelling on the dorsal surface of the tongue of 1 month duration. Her general health status was satisfactory, presenting no systemic diseases. On clinical examination a relatively soft mass of about 1.5cm in maximum diameter, covered by normal epithelium was identified on the centre of middle third of the dorsal surface of the tongue (Fig. 1). Possible clinical diagnosis included gra-



Fig. 1: Macroscopic appearance of the lesion on the middle third of tongue's dorsal surface.

nular cell tumor and lingual thyroid gland. Proper blood testing for TSH, T3 and T4 as well as thyroid ultrasonography were requested, found to be within normal limits. An excisional biopsy was performed and tumor was removed with no intra-operative complications. Histopathological examination was consistent with a mucocele, exhibiting an amorphous material surrounded by granular connective tissue without epithelial lining on the periphery (Fig. 2). There were numerous foamy histiocytes and some monomorphonuclear leucocytes accompanying the mucus in the cavity (Fig. 3). Patient was examined on regular follow-up basis, exhibiting no signs of recurrence for the last 1 year.

Discussion

As previously described, there are 3 distinct sets of oral minor salivary glands in the tongue: the glands of Blandin-Nuhn, the glands of Weber and the glands of von

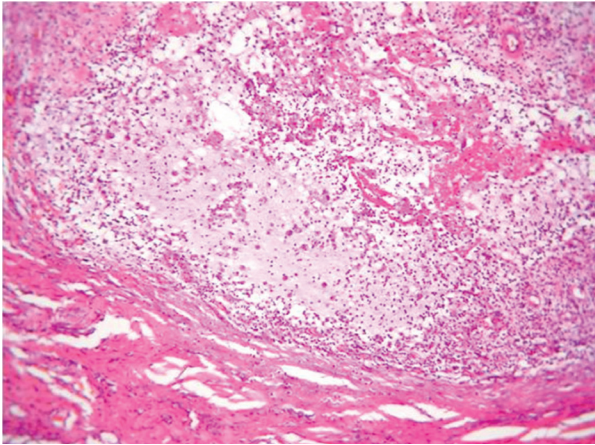


Fig. 2: Microphotograph exhibiting a cystic cavity with absence of epithelial lining, surrounded by granulation tissue. (Haematoxylin – eosin stain, original magnification x 100).

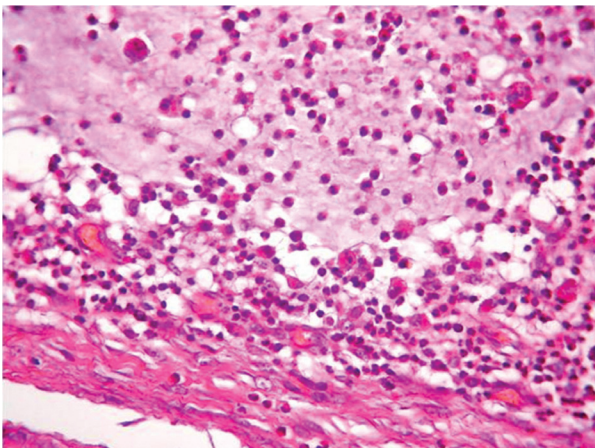


Fig. 3: In the lesions' periphery, fibrous connective tissue and numerous foamy histiocytes are identified. (Haematoxylin – eosin stain, original magnification x 400).

Ebner. The glands of Blandin-Nuhn are composed of sero-mucous acini, located in the anterior ventral surface of the tongue. The glands of Weber are exclusively mucous glands, located close to the lingual tonsils. Finally, the glands of von Ebner are serous salivary glands, located at the base of the grooves that surround the circumvallate papillae and the base of the clefts between the foliate papillae.

Focusing in the tongue, as an anatomic structure, mucocoeles develop usually in the ventral surface (mucocoeles of Blandin-Nuhn glands) (6). Normally, according to anatomic studies, there are no minor salivary glands on the dorsal surface of the tongue. However, to the best of

our knowledge scarce case reports have been published, describing mucocoeles of the dorsum of the tongue. As an effort to collect all these rare cases, we performed a comprehensive search of the English language literature using PubMed/MEDLINE electronic database; all published mucocoeles of the dorsum of the tongue were reviewed, and their demographic / clinicopathologic data are presented in table 1.

According to collected data, a wide age range of patients ranging from birth to 74 years old was recorded.

Mucous cysts were identified in the anterior as well as in the posterior area of the dorsal surface of the tongue, exhibiting no predilection.

Regarding their aetiology, we can speculate that lesions of the anterior dorsal tongue may develop from Blandin-Nuhn glands while those of the posterior area may derive from Weber and von Ebner salivary glands. Wong Chung *et al.* suggested that a mucous cyst identified in a newborn most likely originated from an anterior lingual gland which drained through a small, closed ended, duct into the dorsal tongue (7). In our case we may also hypothesize that a minor salivary gland tissue was entrapped between the first or second branchial arches when they fused, further forming the mucocoele due to possible irritating factors e.g. trauma.

According to the histopathological criteria there were 3 mucous extravasation cysts, 2 mucous retention cysts while in 1 case there were no data available specifying its type.

Mucocoeles on the posterior surface / base of the tongue are possibly more challenging to diagnose, necessitating special diagnostic examinations e.g. laryngoscopy while those in the anterior surface usually require a thorough clinical examination with no further exams. Also those lesions in the tongue base were found to provoke more severe symptoms including dysphagia and difficulty in swallowing while they were all removed under general anaesthesia.

Although the limited number of intraoral mucocoeles developed in the dorsal surface of the tongue precludes definitive conclusions, abovementioned discussion includes author's remarks / observations from the collected cases.

Mucocoeles of the dorsal tongue surface represent rare clinical entities, due to the fact that there are no salivary glands located on this area. It seems that they develop due to pathophysiologic mechanisms, that further require to be discovered. Due to their scarce description the need for future case reports to be published is imperative in order to widen our understanding of their clinical features.

Table 1: Data summary of mucoceles developed in the dorsal surface of the tongue published in the English language literature.

Author/Year	Age, sex	Type of lesion	Chief complaint	Location	Clinical features	Diagnostic exams	Follow-up
Yoshikawa (8) / 1994	22, F	MRC	Swelling	Anterior dorsal tongue- midline	Elastic, soft, no fluctuation / 32 mm diameter	MRI: round lesion between the superior longitudinal and genioglossal muscles, not enhanced by contrast medium, water-like density Aspiration: 6 mL of clear mucous	NR
Zancope (9) / 2009	6, F	MEC	Lump in the throat, difficulty in swallowing, > 3 months	Posterior tongue base-midline	Nodule in color to the oral mucosa / 1.5 cm diameter	Videolaryngoscopy: nodule covered with normal mucosa Thyroid hormone tests and scintigraphy normal Immunohistochemistry of granulation tissue: CD68+ macrophages, CD3+ T lymphocytes, CD20 + B lymphocytes	11 months / no recurrence
Acar (10) / 2010	37, F	MRC	Progressive dysphagia, 3 months	Tongue root-extending to the posterior plica	Painless tense, well-defined swelling / 2 cm diameter	Pale yellow viscous fluid collected from the cyst cavity	NR
Wong Chung (7) / 2014	New-born, M	NR	Breastfeeding problems	Anterior dorsal tongue - midline	Mobile bluish mass / 2 cm	Cystic content: amylase rich / mucin related	7 months / no recurrence
Hur (11) / 2016	32, M	MEC	No symptoms	Tongue base-midline	2.8 x 2.5 x 2.8 cm	Laryngoscopy: soft movable cyst without tenderness CT: thin-walled cystic mass without enhancing solid component cervical spine MRI: high signal intensity on the T2-weighted image and slightly low signal intensity on the T1-weighted image	Duration not specified / no recurrence
Our case / 2017	74, F	MEC	Painless swelling	Middle third dorsal tongue-midline	Relatively soft mass covered by normal mucosa / 1.5cm diameter	Thyroid hormone tests and ultrasonography normal	1 year / no recurrence

M: male, F: Female

MEC: mucous extravasation cyst, MRC: mucous retention cyst

NR: not reported

References

- Chi AC, Lambert PR, Richardson MS, Neville BW. Oral mucoceles: A clinicopathologic review of 1,824 cases, including unusual variants. *J Oral Maxillofac Surg.* 2011;69:1086-93.
- Re Cecconi D, Achilli A, Tarozzi M, Lodi G, Demarosi F, Sardella A, et al. Mucoceles of the oral cavity: a large case series (1994-2008) and a literature review. *Med Oral Patol Oral Cir Buccal.* 2010;15:e551-6.
- Pouloupoulos A, Andreadis D, Parcharidis E, Grivea I, Syrogiannopoulos G, Kolokotronis A. Salivary mucoceles in children and adolescents: a clinicopathological study. *Global J Med Clin Case Rep.* 2017;4:11-4.
- Minguez-Martinez I, Bonet-Coloma C, Ata-Ali-Mahmud J, Carillo-Garcia C, Penarrocha-Diago M, Penarrocha-Diago M. Clinical characteristics, treatment, and evolution of 89 mucoceles in children. *J Oral Maxillofac Surg.* 2010;68:2468-71.
- de Brito Monteiro BV, Bezerra TM, da Silveira EJ, Nonaka CF, da Costa Miguel MC. Histopathological review of 667 cases of oral mucoceles with emphasis on uncommon histopathological variations. *Ann Diagn Pathol.* 2016;21:44-6.
- Adachi P, Soubhia AM, Horikawa FK, Shinohara EH. Mucocele of

the glands of Blandin-Nuhn-clinical, pathological and therapeutical aspects. *Oral Maxillofac Surg.* 2011;15:11-3.

- Wong Chung JE, Ensink RJ, Thijs HF, van den Hoogen FJ. A congenital mucocele of the anterior dorsal tongue. *Int J Pediatr Otorhinolaryngol.* 2014;78:1179-81.
- Yoshikawa F, Okunishi Y, Sakuda M. Mucous cyst forming on the dorsal surface of the tongue: report of a case. *J Oral Maxillofac Surg.* 1994;52:770-1.
- Zancope E, Pereira AC, Ribeiro-Rotta RF, Mendonca EF, Batista AC. Mucocele in posterior dorsal surface of tongue: an extremely rare location. *J Oral Maxillofac Surg.* 2009;67:1307-10.
- Acar B, Gunbey E, Babademez MA, Karabulut H, Oktem H, Karasen RM. A rare presentation of mucocele of the tongue. *J Craniofac Surg.* 2010;21:2032.
- Hur JH, Byun JS, Kim JK, Lee TJ, Yang HS. Mucocele in the base of the tongue mimicking a thyroglossal duct cyst: a very rare location. *Iran J Radiol.* 2016;13:e24827.

Conflicts of interest

None.