

Inclusion Europe

Easy-to-Read: Making All Types of Information Accessible

By SOUFIANE El Amrani and GUILLAUME Jacquinet

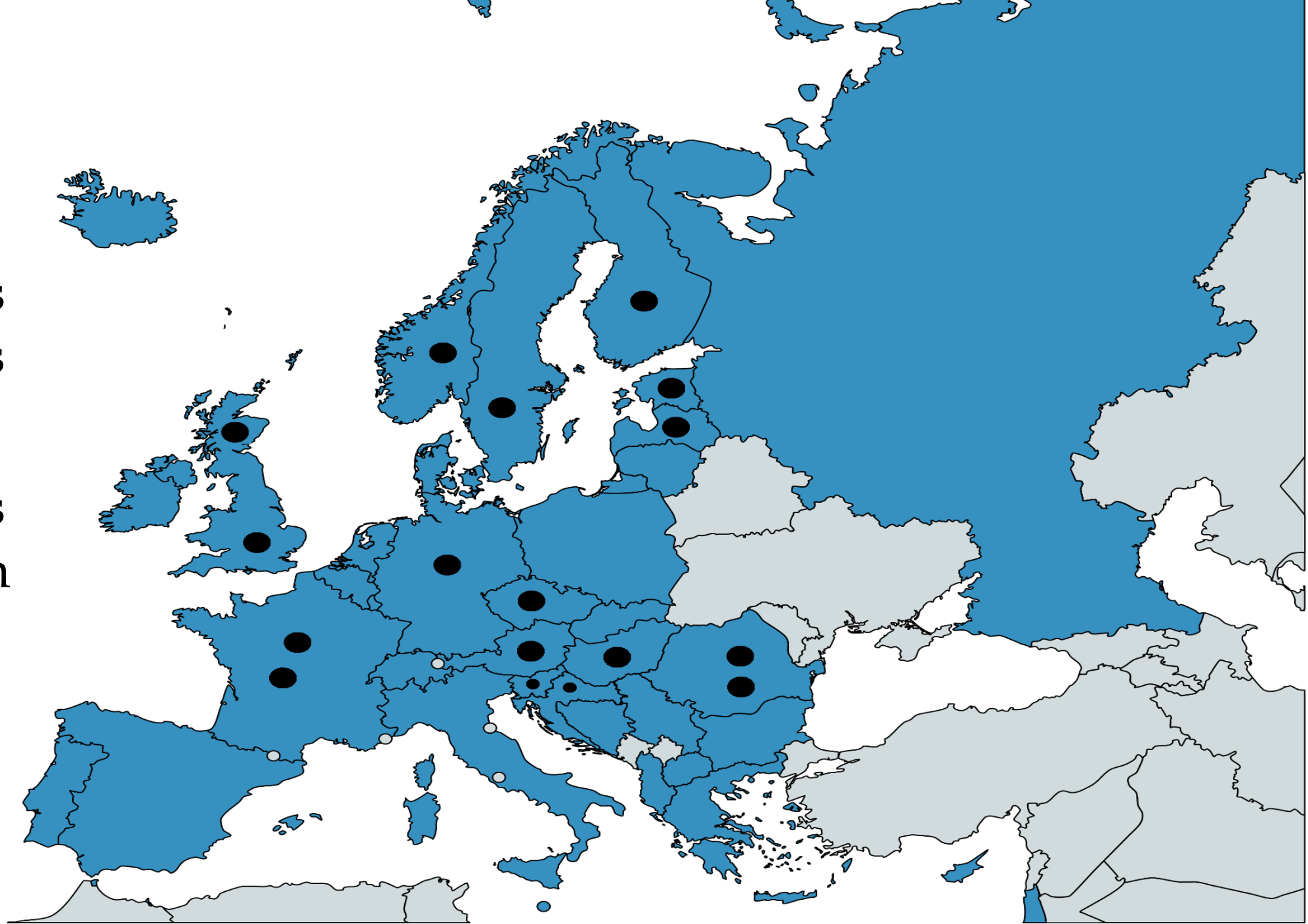


Inclusion Europe members

- Members
- European platform of self-advocates

71 members
38 countries

18 members
of European
platform of
self-
advocates



Who we are

- Inclusion Europe is an organisation that defends and speaks for people with intellectual disabilities and their families in Europe.
- Inclusion Europe was created in 1988.
- The European Platform of Self-Advocates is part of Inclusion Europe since the year 2000.

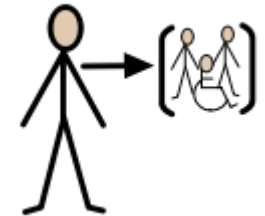


Inclusion Europe is a member of the following organisations:

- Inclusion International
- European Disability Forum

What we do

- Inclusion Europe fights for the rights and full inclusion for all people with intellectual disabilities and their families.
- Inclusion Europe speaks for its members in Europe.
- Inclusion Europe tries to make European laws better to defend people with intellectual disabilities and their families.
- Inclusion Europe gives people with intellectual disabilities a way to speak up in Europe.



Easy-to-read?





European easy-to-read Logo

Easy to read is information that people with intellectual disabilities can read and understand.

Why easy-to-read?



- Easy-to-read makes information accessible.
- Easy-to-read allows people to make informed decisions and to take part in society.
- Easy-to-read benefits all people, not only people with intellectual disabilities. Older people, immigrants, people with low reading skills benefit too.



- Easy-to-read does not fix everything.
- Some people would prefer a spoken word (audio or video) or other forms of expressing themselves and of receiving information.
- Meetings and procedures need to be accessible too. People with disabilities must be involved.



Standards of easy-to-read







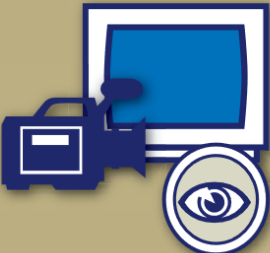
European standards for making information easy to read and understand

www.easy-to-read.eu

Información para todos

Las reglas europeas para hacer información
fácil de leer y comprender



Choose the best format for your information.

This is
easy to read

This is not
easy to read

Always use a font that is clear and easy to read.
A font is a type of writing.
For example Arial or Tahoma
are clear and easy to read fonts.

- ⊙ **Never use writing that is too light and does not print off well.**


Example: This is Eras 14 Light.
This is not easy to read because it is too light.

- ⊙ **Never use italics.**

Example: *This text is in italics.*
It is not easy to read.

- ⊙ **Never use a special writing design.**

Example:
This is text with shadows.
It is not easy to read.

- 
- Find out as much as you can about the people who will use your information and about their needs.
 - Use the right language.
 - For example do not use language for children when your information is for adults.

- Make sure you explain the subject clearly and also explain any difficult words to do with that subject.
- Always involve people with intellectual disabilities when making your information.



Use the right words

- Use words that people will know well.
- Do not use difficult words. If you need to use difficult words, explain them clearly.
- Use the same word to describe the same thing throughout your document.
- Do not use difficult ideas such as metaphors.

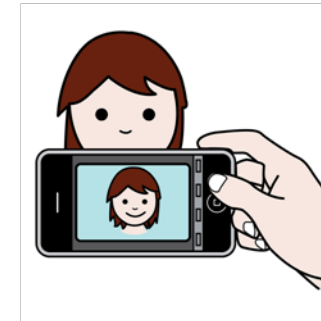
- Do not use words from other languages unless they are very well known.
- Avoid using initials.
 - Use the word in full.
- Try not to use percentages and big numbers.
- Use words like “few” and “many”.

Examples



Pictures

We give a lot of information on the Internet.



How to Include People with Intellectual Disabilities

- Accessibility
 - Cards at meetings
 - Building accessibility (entrance, toilets, lifts)
- Flexibility meeting (place, hours)
- Make sure the voice of self-advocates are heard



Europe for us newsletter

Europa para todos



Numéro 1 / 2018

¡Escucha nuestras voces!





- Able to include project created Kolumba, a Gmail interface (with Google) easy to use:
 - Accessible for different kind of disabilities.
 - Simplified mailbox to receive/send messages, manage contacts.



also created:

- Text2Picto: Text to pictogram translator
- Simplitex: Text Simplifier
- Text to speech

Video

- How to safely use the internet



Comment - Ask - Engage

[Website](#)

[Twitter](#)

[Facebook](#)

[Newsletters](#)

[Youtube](#)

secretariat@inclusion-europe.org