

Journal section: Operative Dentistry and Endodontics  
 Publication Types: Research

doi:10.4317/jced.58413  
<https://doi.org/10.4317/jced.58413>

## Morphological analysis and immunohistochemical expression in restorations with self-adhesive resin: A randomized split-mouth design-controlled study

Natália-Gomes de Oliveira <sup>1</sup>, Marina-Torreão da Silveira <sup>2</sup>, Leorik-Pereira da Silva <sup>3</sup>, Keylla-Marinho-Albuquerque Barros <sup>4</sup>, Laís-Maciel Costa <sup>1</sup>, Marília-de Lima Soares <sup>4</sup>, Marianne-de Vasconcelos Carvalho <sup>5</sup>

<sup>1</sup> MSc, PhD student, Dental School, Universidade de Pernambuco/FOP-UPE; Camaragibe, PE, Brazil

<sup>2</sup> MSc, Dental School, Universidade de Pernambuco/FOP-UPE; Camaragibe, PE, Brazil

<sup>3</sup> MSc, PhD, Adjunct Professor, Dental School, Universidade Federal de Campina Grande (UFCG), PB, Brazil

<sup>4</sup> MSc, PhD, Dental School, Universidade de Pernambuco/FOP-UPE; Camaragibe, PE, Brazil

<sup>5</sup> MSc, PhD, Adjunct Professor, Dental School, Universidade de Pernambuco/FOP-UPE; Camaragibe, PE, Brazil

### Correspondence:

Universidade de Pernambuco/ FOP-UPE  
 Professor Luis Freire Avenue, 700  
 Cidade Universitária, Recife/PE, Brazil  
[nataliagomes04@hotmail.com](mailto:nataliagomes04@hotmail.com)

Received: 18/03/2021  
 Accepted: 24/05/2021

de Oliveira NG, da Silveira MT, da Silva LP, Barros KMA, Costa LM, Soares ML, Carvalho MV. Morphological analysis and immunohistochemical expression in restorations with self-adhesive resin: A randomized split-mouth design-controlled study. J Clin Exp Dent. 2021;13(9):e927-34.

Article Number: 58413 <http://www.medicinaoral.com/odo/indice.htm>  
 © Medicina Oral S. L. C.I.F. B 96689336 - eISSN: 1989-5488  
 eMail: [jced@jced.es](mailto:jced@jced.es)  
**Indexed in:**  
 Pubmed  
 Pubmed Central® (PMC)  
 Scopus  
 DOI® System

### Abstract

**Background:** To evaluate the morphology and immunohistochemical expression of MMP-9, TIMP-3, COL-I, TNF-alfa and COX-2 in the dentinopulp complex of restorations with self adhesive composite (Vertise Flow/Kerr) compared with conventional resin composite with self-etching adhesive (Filtek Z250/3M ESPE and Clearfil SE Bond/Kuraray-Noritake).

**Material and Methods:** A randomized, controlled, double-blind, split-mouth, two-arm clinical trial was conducted. Twenty-seven volunteers with third molars indicated for extraction received two deep class I restorations, one with each material. The morphology and immunohistochemical expression were measured at 15 days after the restorative procedures. The data were submitted to the Fisher's Exact test ( $\alpha=0.05$ ).

**Results:** Through morphological analysis, a slight disorganization of the odontoblastic layer was visualized, along with a slight inflammatory infiltrate in the VERT and CSEB groups ( $p < 0.05$ ). In immunohistochemical analysis, TNF-alpha, MMP-9, TIMP-3 and COX-2 demonstrated more cases of positive pulp labeling.

**Conclusions:** Self-adhesive resin composite and conventional resin composite with a self-etching bonding agent promoted slight alterations in the dentin-pulp complex, indicating a repair ability and reversibility of the inflammatory process against aggressions of the adhesive restorative procedure.

**Key words:** Immunohistochemistry, inflammation, randomized clinical trial, self-adhering composite, dentistry.

## Introduction

Adhesive restorations may be performed with different hybridization strategies that use complete smear layer removal by an etch-and-rinse adhesive system, or smear layer modification by a self-etch and self-adhesive system (1). Simplification of the restorative procedure has always been a clinical aim, not only to reduce the number of operative procedures but also to decrease the number of possible errors from multiple steps (2).

One of advances in dentistry is the introduction of self-adhering flowable composite resins (SACs) which are a product of combining an all-in-one bonding system and flowable composite resin. By the incorporation of glycerophosphate dimethacrylate functional monomer (GPDM) into the chemical composition of composite resins, the steps of direct restorative procedures are simplified. Based on manufacturer's claim, this monomer exhibits acidic properties; it etches the tooth structure, bonds to the calcium of tooth structure, and has two functional methacrylate groups, which can copolymerize with other methacrylate monomers (3). Limited information is available on the clinical performance of SACs (4).

The composition of restorative materials may trigger an inflammatory response (5). Cytokines such as cyclooxygenase-2 (COX-2) are released as well as growth factors (tumor necrosis factor alpha - TNF- $\alpha$ ) and proteolytic enzymes (such as matrix metalloproteinases - MMPs). MMPs have the capacity of degrading components of the extracellular matrix (ECM), such as collagen I (COL-I), compromising the quality of the restoration and reducing the biocompatibility of these materials (6). MMPs can be regulated by the interaction of tissue inhibitors of metalloproteinases (TIMPs). The balance between MMPs and TIMPs regulates bone remodeling rate and ECM degradation (7).

Therefore, this study is aimed to evaluate the morphology and immunohistochemical expression of MMP-9, TIMP-3, COL-I, TNF- $\alpha$  and COX-2 in the dentin-pulp complex of restorations with SAC (VERT group) (Vertise Flow/Kerr) compared with conventional resin composite with self-etching adhesive (CSEB group) (Filtek Z250/3M ESPE and Clearfil SE Bond/Kuraray-Noritake). The null hypothesis tested was that no difference would be found regarding the expression of MMP-9, TIMP-3, COL-I, TNF- $\alpha$  and COX-2 between restorative techniques.

## Material and Methods

### -Study design

A randomized, controlled, double-blind, split-mouth, two-arm clinical trial was conducted. This study was approved by the Ethics and Research Committee of the Universidade of Pernambuco (1.879.562) and registered by the Brazilian Registry of Clinical Trials (ReBEC) (RBR-5ggf5).

### -Population and sample size

Twenty-seven volunteers were recruited at the Buco-Maxillofacial Surgery and Traumatology Service of the Dental School, Universidade de Pernambuco (FOP/UPE), PE, Brazil. Participants were aged between 18 and 40 years (mean 25.92 years) and of both sexes. A total of fifty-four third molars with an indication of extraction (orthodontic reasons) were included.

### -Eligibility criteria

The study inclusion criteria were 1) two third molars indicated for extraction for orthodontic reasons; 2) healthy teeth without caries, score "0" according to the International Caries and Assessment System (ICDAS); 3) complete root development; and 4) fully erupted teeth.

Teeth without pulpal vitality or with altered pulpal vitality demonstrated using cold sensitivity tests, percussion, or palpation; the presence of pulpal calcification; and the impossibility of isolation with rubber dam were excluded.

### -Randomization, allocation, and blinding

A total of 54 restorations in 27 volunteers were performed by the same operator (Fig 1). Each participant received two restorations according to the experimental groups (Table 1). The restorative procedure followed the sequence of quadrants (upper right, upper left, lower left, lower right). For the choice of restorative material, a simple randomization scheme was used immediately before the bonding procedures. A researcher who was not involved in the clinical and evaluation procedures chose the restorative material to be used, by tossing a coin, where "tails" would represent the self-adhesive resin composite group (VERT), and "heads" the teeth restored using the conventional technique with prior bonding procedure (CSEB). Patients and evaluators were not aware of the type of material used for each tooth. As control group (CO), intact teeth with healthy pulp were used following the same inclusion and exclusion criteria for restored teeth. They were removed from the same patients belonging to the sample.

### -Clinical procedure

#### •Cavity preparation

One previously calibrated operator performed all restorations. Before the restorative procedure, a periapical and a bite-wing radiograph was made. In order to standardize the cavity preparation depth (1 mm from the roof of the pulp chamber), the distance from the occlusal surface to the roof of the pulp chamber was used for measuring with the radiograph. Anesthesia was done with 2% mepivacaine with epinephrine 1:100,000 (DFL, Rio de Janeiro, RJ, Brazil), followed by tooth prophylaxis with pumice/water slurry. For cavity preparation, a long pear-shaped carbide bur (no. 245, KG Sorensen, Barueri, Brazil) was used with a highspeed handpiece with intermittent movements and abundant air/water spray. A groove was made in each bur to serve as a "stop," limi-

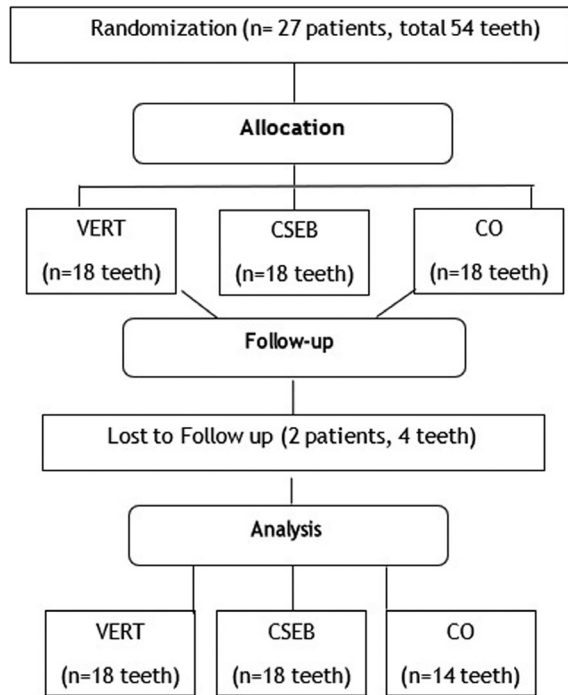


Fig. 1: A flowchart of the study.

ting the depth of the preparation (1 mm from the roof of the pulp chamber). The mesiodistal extension of the cavity comprised 1/3 of the intercuspal distance. Each bur was only used once. After preparing the cavity, another bite-wing radiograph was made to confirm the cavity depth. Rubber dam isolation was done, and the cavities were disinfected with a 0.12% chlorhexidine solution. Randomization (coin-tossing) was then performed.

**-Restorative procedure**

The restorative materials were applied according to the manufacturers' instructions (Table 1). All photoactivation procedures were performed with halogen light (Ultralux, DabiAtlante, Ribeirão Preto, SP, Brazil) at a power density of 800 mW/cm<sup>2</sup>, previously measured with a radiometer. After restoration placement, the occlusal contacts were evaluated with marking paper. The finishing and polishing were performed in the same session. Initially, a flame shaped fine diamond rotary instrument (no. 3118F, KG Sorensen) was used at high speed under abundant air/water spray and intermittent movement. Afterward, the restoration was polished with rubber points in decreasing order of abrasiveness using a low-speed handpiece (Microdont, São Paulo, SP, Brazil). Both restorations were done during the same clinical appointment.

**-Surgical Procedure**

At the interval of 15 days, after the restorative procedure, the extractions were performed. Immediately after each extraction, 1 to 2 mm of the apical thirds of the roots were sectioned with a long diamond bur (#1065), in high speed, in intermittent movements and abundant

Table 1: Materials used in the study according to the manufacturer's instructions.

Product	Batch number	Compositions	Application Technique
Vertise flow (KerrTM, EUA)	5740675	GPDM and methacrylateco-monomers pre- polymerized filler, barium glass, nano-sized colloidal silica, nano-sized ytterbium fluoride	Vertise flow was applied on to prep with a dispensing tip and a thin layer (<0.5 mm) of Vertise flow was brushed onto the entire cavity wall and beveled area with moderate pressure for 15-20s. If necessary, excess material was removed around margins with the provided brush. Additional layers of the restoration were built with Vertise Flow in increments of 2 mm or less. Each increment was light cured for 20s.
Clearfil SE Bond (Kuraray-Noritake, Osaka, Japan)	900270	Primer: HEMA, MDP, hydrophilic aliphatic dimethylacrylate, dleamphorquinone, water, N, N-diethanolp-toluidine Bond: MDP, Bis-GMA, HEMA, Hydrophobic aliphatic dimethacrylate, dlCamphorquinone, Diethanol-p-toluidine, colloidal silica	Selective acid conditioning in enamel with 37% phosphoric acid for 15s. The prep was then washed for 15s and dried with a light air jet. Primer was applied for 20s on dried dentine. A mild air flow was applied for 20s to evaporate the solvents Bond was then applied for 20s and gently air dried. Light cure was done for 10s.
Filtek Z250 (3M ESPE, St. Paul, MN, USA)	513363	BisEMA, UDMA, BisGMA, TEGDMA, silane-treated ceramic (75-85 wt%), benzotriazol, EDMAB	Resin composite was inserted in increments less than 2 mm and each increment was light cured for 20 seconds.

GPDM: glycerol phosphate dimethacrylate; HEMA: 2-hydroxyethyl methacrylate; MDP: methacryloyloxydecyl dihydrogen phosphate; BisGMA: bisphenylglycidyl dimethacrylate; BisEMA: ethoxylated bisphenol-A dimethacrylate; UDMA: urethane dimethacrylate; TEGMA: triethylene glycol dimethacrylate; EDMAB: ethyl 4-(dimethylamino) benzoate

water cooling, in order to allow the best penetration of the solution (10% formaldehyde), in which the tooth was soon submerged.

**-Laboratory processing**

The teeth were demineralized in 10% EDTA (Ethylene-diamine tetraacetic acid). The demineralizing solution was renewed every two days, until the tissue reached the optimum demineralization to be processed, accessed with the use of microneedle tests and radiographic method. For this, the teeth were initially submitted to an orthoradial radiograph in a periapical film, representing the initial stage, that is, without decalcification. Periodically, new radiographic shots were taken in order to compare with the initial images.

**-Morphological analysis**

For histomorphological analysis, 5µm-thick sections were cut and stained by the hematoxylin and eosin technique. The evaluation of the tissue morphology was adapted and categorized according to the criteria of Souza, Hebling and Randall (8):

Regarding the tissue response: score 0 (none or few inflammatory cells dispersed in the pulp area); score 1 (mild inflammatory infiltrate); score 2 (Moderate infiltrate of inflammatory cells involving the coronary pulp); score 3 (Severe infiltrate of inflammatory cells involving the coronary pulp).

Regarding the organization of pulp tissue: score 0 (normal tissue morphology); score 1 (disorganized odontoblastic layer, but normal central pulp tissue); score 2 (Complete morphological disorganization of pulp tissue); score 3 (Pulp necrosis). The morphological analysis was performed comparing VERT and CSEB.

**-Immunohistochemical method**

The paraffin samples were cut into 3 µm. The trilogy system (Cell Marque, Rocklin, USA) was used for deparaffinization, rehydration and antigenic recovery, in a pressure cooker and then immunohistochemical staining was performed after blocking the endogenous peroxidase by the streptavidin-biotin peroxidase method optimized by the LSAB amplification system (Strept Avidin Biotin Labeled mouse for primary antibodies - DAKO) using MMP-9, TIMP-3, TNF-alpha and COX-2 antibodies (Table 2). For COL-I, the antigen retrieval step was performed utilizing 1% pepsin solution at room temperature, for 120 minutes. As negative control, histological sections were incuba-

ted with 1% bovine serum albumin (BSA-Bovine Serum Albumin) in buffer replacing the primary antibodies. As positive control, tissue sections from breast carcinoma were used for TNF-alfa, COX-2, MMP-9 expression and placenta for TIMP-3 and COL-I expression.

Immunohistochemical analysis was performed by two oral pathologists. The degree of agreement between the evaluators was kappa > 0.8. Discordant cases were discussed among themselves and the evaluators came to a consensus.

This analysis was examined by light microscopy and classified considering the following aspects: presence of immunostaining (positive + or negative -); location in the tooth (dentin or pulp); location in the pulp (odontoblastic layer and central pulp region), tissue distribution (focal or diffuse) e immunostaining intensity. According to the staining intensity, the positive cases were classified in score, adapted by Alvares *et al.* (9): zero (no positive cells); mild (1-25% positive cells), moderate (25-50% positive cells) and intense (> 50% positive cells).

**-Statistical analysis**

Data were analyzed descriptively by absolute and percentage frequencies. To evaluate possible differences and/or inferential associations between the expression profiles of COX-2, TNF-alpha, MMP-9, TIMP-3 and COL-I, Fisher's Exact test used. The margin of error used in deciding statistical tests was 5%. The software used for data entry and statistical calculation was IBM & SPSS (Statistical Package for the version Social Science, version 23).

**Results**

**-Morphological analysis**

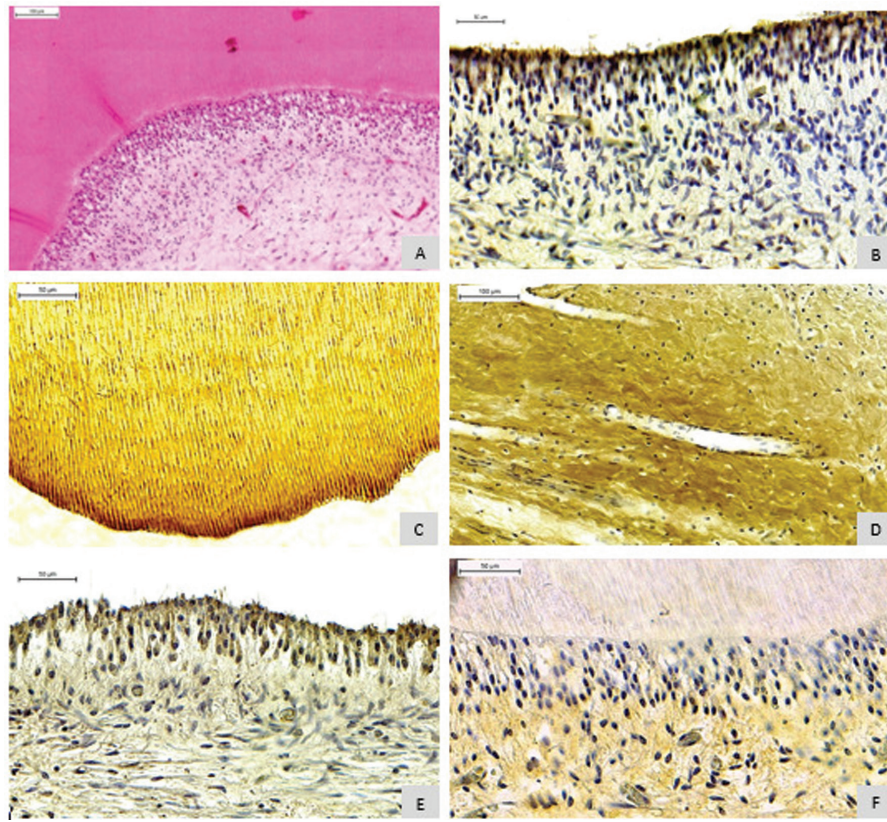
Analysis of the tissue response showed a score of 0 in all groups analyzed. Regarding pulp tissue organization, score 1 was predominant VERT: 52.9% and CSEB: 64.7% (*p* < 0.05), showing the disorganized odontoblasts layer, but with normal central pulp tissue and mild inflammatory infiltrate (Fig. 2). The analysis of the tissue response as well as the organization of the pulp tissue in the CO group, showed score 0 (Table 3).

**-Immunohistochemical analysis**

The immunohistochemical expression of COX-2 was negative in dentin (VERT: 93.3%; CSEB: 100%; CO: 100%) and pulp (VERT: 93.3%; CSEB: 90.9%; CO: 100%) (*p* =1.000) (Table 4).

**Table 2:** Specificity, clone, incubation time and dilution of primary antibodies.

Specificity	Clone	Incubation time	Dilution
MMP-9	2C3	60 min	1:125
TIMP-3	MM0036-7D3	60 min	1:50
COL-I	Policlonal	120 min	1:25
TNF-alpha	52B83	60 min	1:100
COX-2	SP21	60 min	1:200



**Fig. 2:** A) Morphological analysis demonstrating a disorganization of the odontoblastic layer (H.E). B) Positive immunohistochemical expression of TNF-alpha in the odontoblast layer. C) Positive immunohistochemical expression of COL-I in dentin. D) Positive immunohistochemical expression of COL-I in pulp. E) Positive immunohistochemical expression of MMP-9 in the odontoblast layer. F) Positive immunohistochemical expression of TIMP-3 in the odontoblast layer and pulp center.

**Table 3:** Specificity, clone, incubation time and dilution of primary antibodies.

Tissue response	VERT	CSEB	CO	Value of <i>p</i>
SCORES				
0	17 (100%)	17(100%)	6 (100%)	**
1	-	-	-	
2	-	-	-	
3	-	-	-	
TOTAL	17 (100%)	17 (100%)	6 (100%)	
<b>Pulp tissue organization</b>				
SCORES				
0	8 (47%)	6 (35.2%)	6 (100%)	<i>p</i> <sup>(1)</sup> =0.030*
1	9 (52.9%)	11 (64.7%)	-	
2	-	-	-	
3	-	-	-	
TOTAL	17 (100%)	17 (100%)	6 (100%)	

(\*) Significant difference at 5,0% level

(\*\*) Not determined due to the occurrence of a single category

(1) Through Fisher's exact test

During sample processing for morphological analysis, some specimens were lost. In the VERT and CSEB group, 1 tooth was lost. In the control group, 8 teeth were lost.

**Table 4:** Immunohistochemical pattern (presence or absence) of TNF-alpha, COX-2, MMP-9, TIMP-3 and COL-I in pulp and dentin in VERT, CSEB and CO.

		<b>VERT</b>	<b>CSEB</b>	<b>CO</b>	<b>Value of p</b>
<b>COX-2</b>					
DENTIN	POSITIVE	1 (6.6%)	0	0	$p_1^{(1)} = 1.000$
	NEGATIVE	14 (93.3%)	11 (100%)	6 (100%)	$p_2^{(1)} = 1.000$
	TOTAL	15 (100%)	11 (100%)	6 (100%)	
PULP	POSITIVE	1 (6.6%)	1 (9%)	0	$p_1^{(1)} = 1.000$
	NEGATIVE	14 (93.3%)	10 (90.9%)	6 (100%)	$p_2^{(1)} = 1.000$
	TOTAL	15 (100%)	11 (100%)	6 (100%)	
<b>TNF-alpha</b>					
DENTIN	POSITIVE	0	1 (11.1%)	0	$p_1^{(1)} = 0.500$
	NEGATIVE	15 (100%)	8 (88.8%)	6 (100%)	$p_2^{(1)} = 0.375$
	TOTAL	15 (100%)	9 (100%)	6 (100%)	
PULP	POSITIVE	11 (73.3%)	8 (88.8%)	4 (66.3%)	$p_1^{(1)} = 0.622$
	NEGATIVE	4 (26.6%)	1 (11.1%)	2 (33.3%)	$p_2^{(1)} = 0.615$
	TOTAL	15 (100%)	9 (100%)	6 (100%)	
<b>MMP-9</b>					
DENTIN	POSITIVE	5 (38.55%)	5 (45.5%)	0	$p_1^{(1)} = 0.193$
	NEGATIVE	8 (61.5%)	6 (54.5%)	6 (100%)	$p_2^{(1)} = 1.000$
	TOTAL	13 (100%)	11 (100%)	6 (100%)	
PULP	POSITIVE	12 (80%)	11 (91.6%)	0	$p_1^{(1)} < 0.001^*$
	NEGATIVE	3 (20%)	1 (8.3%)	6 (100%)	$p_2^{(1)} = 0.605$
	TOTAL	15(100%)	12 (100%)	6 (100%)	
<b>TIMP-3</b>					
DENTIN	POSITIVE	3 (18.75%)	2 (25%)	0	$p_1^{(1)} = 0.670$
	NEGATIVE	13 (81.25%)	6 (75%)	6 (100%)	$p_2^{(1)} = 1.000$
	TOTAL	16 (100%)	8 (100%)	6 (100%)	
PULP	POSITIVE	16 (94.12%)	2 (25%)	0	$p_1^{(1)} < 0,001^*$
	NEGATIVE	1 (5.88%)	6 (75%)	6 (100%)	$p_2^{(1)} = 0.001^*$
	TOTAL	17 (100%)	8 (100%)	6 (100%)	
<b>COL-I</b>					
DENTIN	POSTIVE	16 (100%)	15 (100%)	5(83.33%)	$p_1^{(1)} = 0.162$
	NEGATIVE	0	0	1(16.66%)	**
	TOTAL	16 (100%)	15 (100%)	6 (100%)	
PULP	POSITIVE	16 (100%)	14 (100%)	5(83.33%)	$p_1^{(1)} = 0.167$
	NEGATIVE	0	0	1(16.66%)	**
	TOTAL	16 (100%)	14 (100%)	6 (100%)	

\*Significant difference at 5%

\*\* Not determined due to single category occurrence

(1) Through Fisher's exact test

(2) Through Pearson's chi-square test

p1 (1) = Comparison between the three groups by Fisher's exact test

p2 (1) = Comparison between the two experimental groups by Fisher's exact test

During sample processing for immunohistochemistry analysis, some specimens were lost.

The TNF-alpha expression in the VERT and CSEB were negative in most cases for dentin (VERT: 100%; CSEB: 88.8%, CO: 100%) ( $p = 0.500$ ). Differently, in the pulp most cases were positive (VERT: 73.3%; CSEB: 88.8%, CO:66.3%) ( $p = 0.622$ ) (Table 4). In all cases of positivity, the marking intensity was mild. When the analysis was in pulp, the odontoblastic layer was the most frequent location. The pattern of tissue distribution of immunoreaction was diffuse (Fig. 2).

The MMP-9 expression in dentin was negative (VERT: 61.5%; CSEB: 54.5%; CO:100%) ( $p = 1.000$ ) (Table 4) in both groups, with mild intensity and diffuse tissue distribution. In the pulp, there was positive staining in 80% VERT and 91.6% CSEB ( $p < 0.001$ ), with higher expression and intensity in the odontoblastic layer for both groups. Staining in the CO group was negative.

Dentin staining for TIMP-3 was negative for most of the samples (VERT: 81.25%; CSEB: 75%; CO: 100%) ( $p = 1.000$ ). In the pulp, there was positive staining only in the VERT group (94.12%). In the CSEB group, the expression was negative (75%), along with CO (100%) ( $p < 0.001$ ), in the odontoblastic layer as well as in the center of the pulp, with mild intensity (Table 4).

COL-I expression in the dentin and in the pulp were positive for all cases in both groups (VERT and CSEB) and 83.33% in the CO group, with intense staining and diffuse tissue distribution (Table 4).

## Discussion

The null hypothesis tested was accepted as no differences were observed between the restorative materials studied. During restorative procedures, the pulp responds in different ways to aggressions resulting from both preparation and toxic elements present in the restorative materials used, which may cause some degree of inflammation (10). Chemical mediators released during the inflammatory response may trigger enzyme activation (MMPs), responsible for bone remodeling and degradation of the ECM (11). MMPs degrade exposed COL fibrils during the restorative procedure. This compromises the hybrid layer formed by the adhesive-dentin interface, reducing the bonding capacity of the restorative material (7). In the current study, the MMP-9 was more diffusely expressed in the pulp in both groups (VERT and CSEB), more specifically in the odontoblastic layer, but with mild staining intensity. In contrast, in the control group, the staining was negative. According to Mazzoni *et al.* (7,12), MMP-9 may have increased protein expression due to external stimuli by chemicals released from restorative materials. This justifies the increased expression of this protein in the groups of materials evaluated in relation to the control group. In dentin, the expression was lower than in pulp. Mazzoni *et al.* (12) studied the distribution and location of MMP-9 in demineralized and non-demineralized dentin. In both situations there was

MMP-9 immunoexpression, however with greater intensity in the demineralized dentin. These findings support our results, as self-etching and self-adhesive materials promote less dentin demineralization due to the elimination of the acid etching step. According to Oliveira *et al.* (2), self-etching and self-adhesive materials disrupt the smear layer and incorporate it into the hybrid layer. MMP-9 can degrade COL type I, IV, V, VII and X, as well as elastin and fibronectin (13). From the results found, COL-I staining was higher in both restorative groups than in the control group, both in pulp and dentin, with intense staining. The increased balance in expression between MMP-9 and TIMP-3, blocking the degradation of COL-I, could be one of the reasons. TIMP-3 was similarly expressed and comparable to MMP-9 in the different groups.

The inflammatory process is necessary for the defense of the pulp against different aggressors (such as restoration preparation and toxic elements present in restorative materials). Several biological molecules can be identified in higher concentrations in inflamed pulp tissues compared to healthy pulp tissues (14). However, in the morphological analysis all samples did not show or showed few inflammatory cells dispersed in the central pulp area. However, in most cases the odontoblastic layer was disorganized, probably due to the trauma preparation from the high-speed handpiece.

Regarding inflammatory proteins, it was possible to observe TNF-alpha immunoexpression in the pulp, both in the VERT and CSEB groups, as well as in control group. However, it is noteworthy that a greater number of positive cases were found in the restored teeth groups. Pezelj-Ribaric *et al.* (15) reported high levels of TNF-alpha in samples of teeth clinically diagnosed with irreversible pulpitis, but considerably lower expression of this cytokine in samples with normal pulps, demonstrating that this marker is related to acute inflammatory responses.

COX-2 plays an important role in pulp inflammation, being undetectable or detected at low levels in healthy tissues and thus regulated by inflamed tissues (16,17). Huang *et al.* (18) showed expression of this mediator in human pulp cells when using two adhesive systems (Prime & Bond 2.1 and Clearfil SE Bond). Contrary to these findings, COX-2 was detected at very low levels in the present study on the dentin-pulp complex in both groups, suggesting that these materials did not provide significant levels of pulp inflammation. Kokkas *et al.* (19) also found that COX-2 activity was induced by TNF-alpha expression in human pulps, with worsening clinical symptoms of pulpitis. These data do not corroborate our findings, as it was observed that most cases were positive for TNF-alpha and negative for COX-2 in the pulp region. However, the degree of staining intensity for TNF-alpha was low. This suggests that the pre-

sence of TNF-alpha was not enough to increase COX-2 activity. The cytotoxicity of a material also depends on the thickness and permeability of the residual dentin as it determines the amount of diffusion into the pulp (20,21). In the present study, at least 1mm of remnant dentin was present when restorations were performed, and few inflammatory cells were found dispersed in the pulp region, demonstrating the reparative capacity of the dentin-pulp complex.

Thus, an extremely important feature in selecting an ideal restorative material is its compatibility and ability to interact with the dentin-pulp complex, helping to prevent pulp damage (22).

A limitation of our study was the loss of some specimens during laboratory processing for morphological and immunohistochemical analysis. Because of this, more clinical studies are needed to evaluate the morphology and immunohistochemical expression of MMP-9, TIMP-3, COL-I, TNF-alpha and COX-2 in the dentinopulp complex of restorations with SAC.

## Conclusions

The self-etching and self-adhesive materials promoted slight alterations in the dentin-pulp complex, indicating a reversibility of the inflammatory process against aggressions of the adhesive restorative procedure.

## References

- Pedrosa VO, França FMG, Turssi CP, do Amaral FLB, Teixeira LN, Martinez EF, et al. Effects of caffeic acid phenethyl ester application on dentin MMP-2, stability of bond strength and failure mode of total-etch and self-etch adhesive systems. *Arch Oral Biol.* 2018;94:16-26.
- Oliveira NG, Lima ASLC, Silveira MT, Araújo PRS, Monteiro GQM, Carvalho MV. Evaluation of postoperative sensitivity in restorations with self-adhesive resin: a randomized split-mouth design controlled study. *Clin Oral Investig.* 2020;24:1829-1835.
- Jordehi AY, Shahabi MS, Akbari A. Comparison of self-adhering flowable composite microleakage with several types of bonding agent in class V cavity restoration. *Dent Res J.* 2019;16:257-63.
- Sachdeva P, Goswami M, Singh D. Comparative evaluation of shear bond strength and nanoleakage of conventional and selfadhering flowable composites to primary teeth dentin. *Contemp Clin Dent.* 2016;7:32631.
- De Souza Costa CA, Hebling J, Scheffel DL, Soares DG, Basso FG, Ribeiro AP. Methods to evaluate and strategies to improve the biocompatibility of dental materials and operative techniques. *Dent Mater.* 2014;30:769-84.
- Mente J, Petrovic J, Gehrig H, Rampf S, Michel A, Schürz A, et al. A Prospective Clinical Pilot Study on the Level of Matrix Metalloproteinase-9 in Dental Pulpal Blood as a Marker for the State of Inflammation in the Pulp Tissue. *J Endod.* 2016;42:190-7.
- Mazzoni A, Tjäderhane L, Checchi V, Di Lenarda R, Salo T, Tay FR, et al. Role of Dentin MMPs in Caries Progression and Bond Stability. *J Dent Res.* 2015;94:241-51.
- Souza CCA, Hebling J, Randall RC. Human pulp response to resin cements used to bond inlay restorations. *Dent Mater.* 2006;22:954-62.
- Álvares PR, Arruda JAA, Silva LVO, da Silva LP, do Nascimento GJF, da Silveira MMF, et al. Immunohistochemical analysis of cyclooxygenase-2 and tumor necrosis factor alpha in periapical lesions. *J Endod.* 2018;44:1783-1787.
- Scheffel DLS, Sacono NT, Ribeiro APD, Soares DG, Basso FG,

Pashley D, et al. Immediate human pulp response to ethanol-wet bonding technique. *J Dent.* 2015;43:537-45.

- Tokuhara CK, Santesso MR, Oliveira GSN, Ventura TMS, Doyama JT, Zambuzzi WF, et al. Updating the role of matrix metalloproteinases in mineralized tissue and related diseases. *J Appl Oral Sci.* 2019;9;27:e20180596 .
- Mazzoni A, Pashley DH, Tay FR, Gobbi P, Orsini G, Ruggeri A Jr, et al. Immunohistochemical identification of mmp-2 and mmp-9 in human dentin: correlative fei-sem/tem analysis. *J Biomed Mater Res A.* 2009;88:697-703.
- Sulkala M, Tervahartiala T, Sorsa T, Larmas M, Salo T, Tjäderhane L. Matrix metalloproteinase-8 (MMP-8) is the major collagenase in human dentin. *Arch Oral Biol.* 2007;52:121-7.
- Bernadi L, Visioli F, Nor C, Rados PV. Radicular Cyst: An Update of the Biological Factors Related to Lining Epithelium. *J Endod.* 2015;41:1951-61.
- Pezelj-Ribaric S, Anic I, Brekalo I, Miletic I, Hasan M and Simunovic-Soskica M. Detection of Tumor Necrosis Factor in Normal and Inflamed Human Dental Pulp. *Arch Med Res.* 2002;33:482-484.
- Tsai CH, Huang FM, Yang LC, Chou MY, Chang YC. Immunohistochemical localization of cyclooxygenase-2 in radicular cysts. *Int Endod J.* 2002;35:854-8.
- Tsai CH, Chou MY, Chang YC. The upregulation of cyclooxygenase-2 expression in human buccal mucosal fibroblasts by are coline: a possible role in the pathogenesis of oral submucous fibrosis. *J Oral Pathol Med.* 2003;32:146-53.
- Huang FM, Tsai CH, Ding SJ, Chang YC. Induction of cyclooxygenase 2 expression in human pulp cells stimulated by dentin bonding agents. *Oral Surg Oral Med Oral Pathol Oral Radiol Endod.* 2005;100:501-6.
- Kokkas AB, Goulas A, Varsamidis K, Mirtsou V, Tziafas D. Irreversible but not reversible pulpitis is associated with up-regulation of tumour necrosis factor-alpha gene expression in human pulp. *Int Endod J.* 2007;40:198-203.
- Duque C, Hebling J, Smith AJ, Giro EM, Oliveira MF, de Souza Costa CA. Reactionary dentinogenesis after applying restorative materials and bioactive dentin matrix molecules as liners in deep cavities prepared in nonhuman primate teeth. *J Oral Rehabil.* 2006;33:452-61.
- Wataha JC. Predicting clinical biological responses to dental materials. *Dent Mater.* 2012;28:23-40.
- Fugolin APP, Pfeifer CS. New resins for dental composites. *J Dent Res.* 2017;96:1085-1091.

## Funding

This work had no funding.

## Ethical approval

This article contains studies with human participants. All procedures performed in studies involving human participants were in accordance with ethical standards of the institutional and/or national research committee and with the 1964 Helsinki declaration and its later amendments or comparable ethical standards.

## Informed consent

Informed consent was obtained from all individual participants included in the study.

## Conflict of interest

Non declared.