

STUDY PROTOCOL

Open Access



Cost-effectiveness and cost-utility evaluation of individual vs. group transdiagnostic psychological treatment for emotional disorders in primary care (PsicAP-Costs): a multicentre randomized controlled trial protocol

Ángel Aguilera-Martín^{1,2}, Mario Gálvez-Lara^{1,2*}, Fátima Cuadrado^{1,2}, Eliana Moreno^{1,2}, Francisco García-Torres^{1,2}, José F. Venceslá^{1,2}, Jorge Corpas^{1,2}, Francisco J. Jurado-González^{1,2}, Roger Muñoz-Navarro³, César González-Blanch⁴, Paloma Ruiz-Rodríguez⁵, Sara Barrio-Martínez⁴, Maider Prieto-Vila⁶, María Carpallo-González⁶, Antonio Cano-Vindel⁶ and Juan A. Moriana^{1,2}

Abstract

Background: Emotional disorders are common, and they have become more prevalent since the COVID-19 pandemic. Due to a high attendance burden at the specialized level, most emotional disorders in Spain are treated in primary care, where they are usually misdiagnosed and treated using psychotropic drugs. This contributes to perpetuate their illness and increase health care costs. Following the IAPT programme and the transdiagnostic approach, the PsicAP project developed a brief group transdiagnostic cognitive-behavioural therapy (tCBT) as a cost-effective alternative. However, it is not suitable for everyone; in some cases, one-on-one sessions may be more effective. The objective of the present study is to compare, in cost-benefit terms, group and individual tCBT with the treatment usually administered in Spanish primary care (TAU).

Methods: A randomized, controlled, multicentre, and single-blinded trial will be performed. Adults with mild to moderate emotional disorders will be recruited and placed in one of three arms: group tCBT, individual tCBT, or TAU. Medical data and outcomes regarding emotional symptoms, disability, quality of life, and emotion regulation biases will be collected at baseline, immediately after treatment, and 6 and 12 months later. The data will be used to calculate incremental cost-effectiveness and cost-utility ratios.

Discussion: This trial aims to contribute to clinical practice research. The involvement of psychologists in primary care and the implementation of a stepped-care model for mental disorders are recommended. Group therapy and a transdiagnostic approach may help optimize health system resources and unblock waiting lists so that people can spend less time experiencing mental health problems.

Trial registration: ClinicalTrials.gov: NCT04847310; Protocols.io: bx2npqde. (April 19, 2021)

*Correspondence: mario.galvez@uco.es

¹ Department of Psychology, Faculty of Education Sciences, University of Cordoba, C/ San Alberto Magno, s/n, 14071 Cordoba, Spain

Full list of author information is available at the end of the article



© The Author(s) 2022. **Open Access** This article is licensed under a Creative Commons Attribution 4.0 International License, which permits use, sharing, adaptation, distribution and reproduction in any medium or format, as long as you give appropriate credit to the original author(s) and the source, provide a link to the Creative Commons licence, and indicate if changes were made. The images or other third party material in this article are included in the article's Creative Commons licence, unless indicated otherwise in a credit line to the material. If material is not included in the article's Creative Commons licence and your intended use is not permitted by statutory regulation or exceeds the permitted use, you will need to obtain permission directly from the copyright holder. To view a copy of this licence, visit <http://creativecommons.org/licenses/by/4.0/>. The Creative Commons Public Domain Dedication waiver (<http://creativecommons.org/publicdomain/zero/1.0/>) applies to the data made available in this article, unless otherwise stated in a credit line to the data.

Keywords: Emotional disorders, Depression, Anxiety disorders, Somatoform disorders, Transdiagnostic therapy, Brief psychological treatments, Primary care, Randomized controlled trial, Cost-benefit analysis

Background

Depressive, anxiety, and somatoform disorders are the most common mental health problems in the world [1, 2]. In 2019, the global prevalence of depressive disorders was 3.76 and 4.05% for anxiety disorders; Europe had the highest prevalence of the former (4.37%) and the second-highest of the latter (5.15%) [3]. The prevalence of both depressive (6.04%) and anxiety disorders (5.42%) in Spain is even higher; depression has continued to increase over the past few years to the point where the country has the third-highest prevalence after Greenland and Greece [3]. All these mental conditions have worsened during the COVID-19 pandemic [4, 5].

In Spain, mental health care is integrated in the national health system (at the specialized care level). It is free and unlimited because it is funded through public taxation. However, as in many other countries, users must have previously accessed primary care first. This is organized in territorially delimited community centres that employ multidisciplinary teams of general practitioners (GPs), nurses, and social workers but few psychologists (though some have been incorporated recently). Since specialized care waiting times are too long, many mental health cases are treated in primary care by GPs, who have consultations of less than 10 min and insufficient training in psychology to handle them [6]. This leads to misdiagnosis [7–9] and poor treatment (or even non-treatment) [6, 10], medication being the principal recourse. Spain is the eighth highest consumer of antidepressants of any OECD country, with 77 defined daily doses (DDD) per 1000 inhabitants, which is double the OECD average [11]; and since 2010, anxiolytic and hypnotic use has increased by 200%, reaching in 91 DDDs in 2020 [12]. The use of psychotropic drugs as a first-line treatment may contribute to relapse and the duration of emotional disorders (EDs) [13] that generate large personal, social, and economic costs [14, 15]. Psychotherapy is the treatment of choice for common mental disorders due to its non-invasive nature [16]; patients tend to prefer psychological treatment, and though its short-term effects may be similar to those of pharmacotherapy, they can be more enduring [17–19]. Moreover, psychotherapy can save costs since it can be abbreviated when the patient or the context requires it, as happens in primary care [20].

According to Chisholm et al. [10], an increase in investment in care for depression and anxiety

disorders would achieve very positive, long-term, cost-benefit ratios, substantially reducing the number of cases and increasing the number of healthy life-years. Some countries have begun to implement evidence-based psychological therapies in primary care settings. The Improving Access to Psychological Therapies (IAPT) programme [21] started in the UK in 2008. It provides community stepped-care low/high-intensity psychological treatment recommended by the National Institute for Health and Care Excellence (NICE) for EDs; cognitive-behavioural therapy (CBT) is the most widely used [16]. Through empirically-supported treatment and session-by-session monitoring, the IAPT programme has achieved great clinical and functional recovery rates with moderate to large effect sizes [21, 22]. It is now being replicated in other countries [23–25].

However, the IAPT programme has several limitations [21]. For example, whereas comorbidity is the most common clinical situation, its assessment and treatment processes are guided by categorical diagnoses, and this may affect therapy outcomes [26, 27]. Furthermore, some authors have observed that certain EDs improve with treatments that do not address them specifically [27]. As a result, a transdiagnostic approach has been developed that focuses on the dysfunctional emotion regulation strategies and cognitive processes that various mental disorders have in common [28–30]. In recent years, this approach has proven to be effective for reducing emotional symptoms and improving quality of life [31–33]. Moreover, transdiagnostic approaches might further reduce costs, as different conditions can be targeted in single group sessions.

Recently, the large national PsicAP study [34, 35] showed the effectiveness of a brief, group, transdiagnostic CBT compared with the treatment usually provided in Spanish primary care, achieving medium effect sizes in the reduction of emotional symptoms and recovery rates that were similar to those obtained by the IAPT programme. A recent trial by Corpas et al. [36] also obtained medium to high effect sizes for symptoms in the group intervention and very high effect sizes in the improvement of emotion regulation strategies and cognitive biases. However, some authors suggest that individual therapy may be more effective than group therapy, especially in the short-term [31, 37]. Some people prefer the former due to the

fear of self-disclosure or the anxiety of social interaction [38]. In addition, the individual format also allows the therapist to establish a better relationship with the patient, which can benefit clinical outcomes [39]. The PsiBrief project [40, 41] compared brief versions of individual and group transdiagnostic CBT with the usual treatment in Spanish primary care. The results did not show any difference between the psychotherapy clusters in reducing emotional symptoms, though they were both more effective than primary care treatment (with moderate effect sizes). Unfortunately, the project did not report on patients' treatment satisfaction or preference, and it is recommended that this should be considered when choosing the therapy [16]. Furthermore, as far as we know, few studies have included cost-benefit analyses of psychological treatments in primary care and even fewer transdiagnostic approaches.

Objectives and hypotheses

We believe that the implementation of transdiagnostic therapy at the primary level using a stepped-care model would save costs and reduce waiting lists. Mild to moderate cases could be treated in primary care and severe ones could be referred to specialized care for combined and more intensive therapies.

The proposed trial aims to compare, in terms of cost-effectiveness and cost-utility, a brief, transdiagnostic CBT in two different formats, individual and group, with the treatment ordinarily administered in primary care (treatment as usual [TAU]) for mild to moderate EDs (i.e., depressive, anxiety, and somatoform disorders). We expect that:

Hypothesis 1

Individual treatment will be generally as effective as group treatment in reducing emotional symptoms and cognitive-emotional regulation biases (i.e., both will show similar post-intervention size effects).

Hypothesis 2

The TAU will be the least effective (i.e., with significantly lower post-intervention size effects).

Hypothesis 3

The group therapy will return the best results in terms of cost-effectiveness and cost-utility.

Hypothesis 4

The TAU will have the least cost-effectiveness and cost-utility ratios.

Hypothesis 5

The same results will be found across the follow-up assessments (6 and 12 months after intervention).

Methods

This protocol has been registered at ClinicalTrials.gov (NCT04847310) and Protocols.io (bx2npqde) and follows the SPIRIT statement [42].

Trial design

This intervention trial has a randomized, controlled, multicentre, and single-blinded design with 3 parallel groups, a 1:1:1 allocation ratio, and 4 measurement times: pre-intervention, immediately after the intervention, and two follow-ups (at 6 and 12 months; see Fig. 1).

Study settings

The RCT will be performed in two primary care centres and one mental health unit in the province of Cordoba (region of Andalusia, Spain): the Carlos Castilla del Pino Health Centre, the Levante Sur Dr. Manuel Barragán Solís Health Centre, and the Community Mental Health Unit of Montilla.

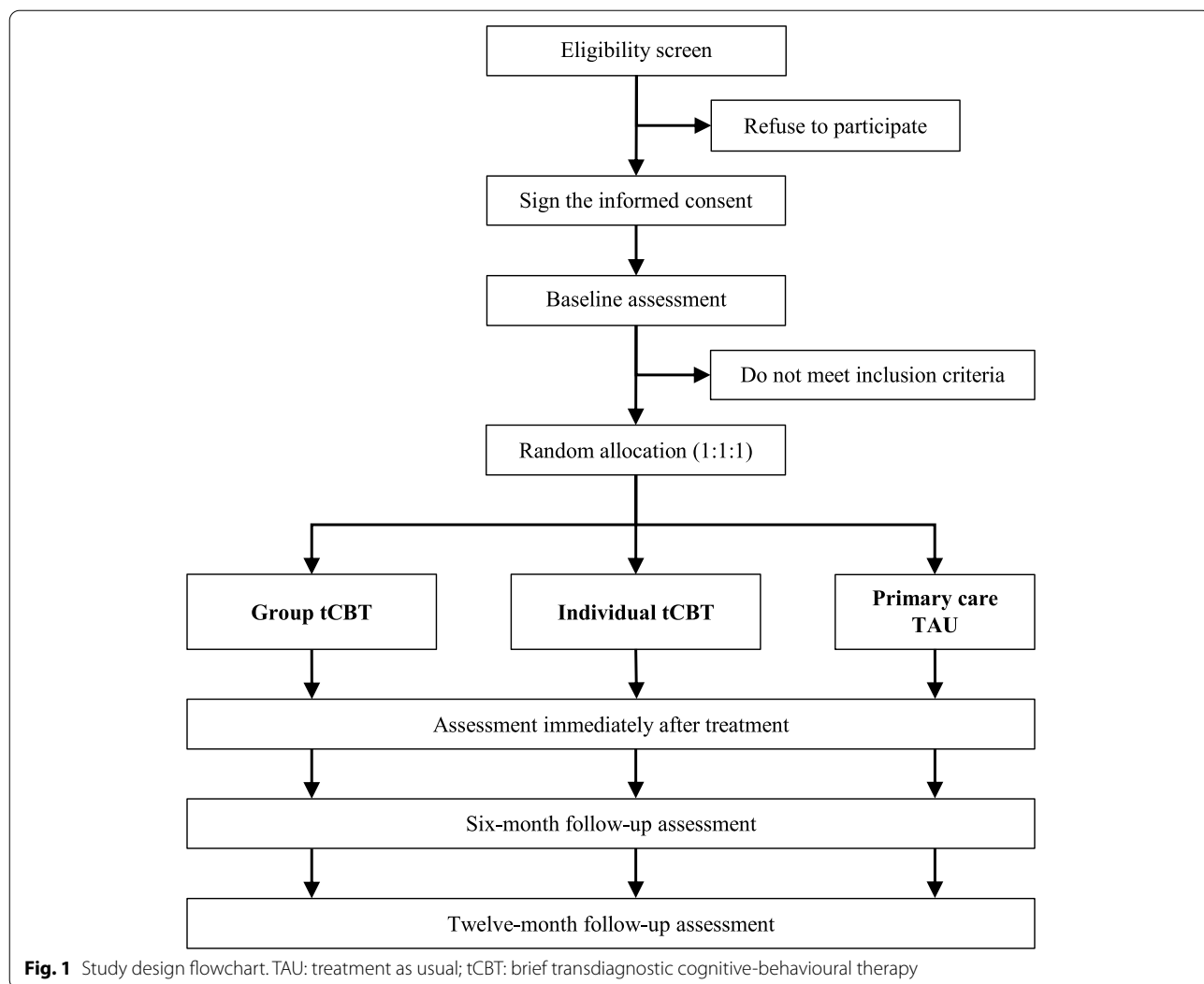
Eligibility criteria

Participants will be adult (18–65-year-old) men and women with mild to moderate EDs (i.e., depressive, anxiety, and/or somatoform disorders) according to the measurement tools (see Data Collection). People over 65 will be excluded to prevent outcomes from being distorted by age-related factors. Those who do not have an ED and/or have a severe mental illness (e.g., severe major depression, anxiety with alcohol abuse disorder, or comorbid psychotic symptoms); a history of frequent or recent suicide attempts; or a high level of functional impairment will also be excluded. People with severe somatoform symptoms will not be excluded unless they have a high level of disability. People who have difficulty understanding the Spanish language; have an intellectual or legal disability; are already participating in a clinical trial; or are undergoing private therapy sessions will be excluded. Potential participants will be asked about previous pharmacological treatment at pre-treatment to control that variable.

Interventions

Group brief transdiagnostic cognitive-behavioural therapy (group tCBT)

It was developed by Cano-Vindel [43] and is based on the Unified Protocol for the Transdiagnostic



Treatment of Emotional Disorders (UP) [44] and the IAPT programme [21]. It consists of seven 90-min sessions over 12–16 weeks and is conducted by a non-assessor clinical psychologist (hereafter the therapist), with 8–10 participants per group. Sessions are weekly or biweekly, and reduce in frequency as the intervention progresses; they are described below. (See Table 1 for the timeline.) The activities and homework are

supported with materials such as theory documents, a CD for progressive muscle relaxation, self-recording sheets, and a therapy web. For more information, see González-Blanch et al. [43].

Session 1: introduction and psychoeducation (I) The main objective of this session is to inform participants about the psychosocial nature of EDs and encourage

Table 1 Group tCBT’s session timeline [43]

Therapy contents	Sessions						
	1	2	3	4	5	6	7
1. Psychoeducation	x	x					
2. Relaxation	x	x					
3. Cognitive restructuring			x	x	x	x	x
4. Behavioural techniques				x	x	x	x
5. Relapse prevention							x

them to play an active role in the treatment so that they attend all sessions and complete the assigned homework.

The first session begins with a presentation by the psychologist, who explains the protocol. The participants introduce themselves and talk about their symptoms and therapy expectations. They are informed about the group treatment: general objectives, components, functioning, timeline, and therapy rules (i.e., punctuality, confidentiality, respect, and notification if they are not going to attend), and provided with information about the treatment web [45] and its use. The psychoeducation then begins. They are given information about emotions, their adaptive role, and when they start to be maladaptive and become EDs. Participants are told how to manage stress and emotions cognitively, physiologically, and behaviourally, and how people sometimes magnify stimuli perceived as threatening or spend too much time thinking about a problem. (Both interpretational and attentional biases are therapy targets.) All this may be explained using personal examples drawn from the group members. Next, they are taught a diaphragmatic breathing technique, an emotion regulation tool to reduce psychophysiological activation. Finally, homework is given: participants are asked to read the therapy documents and online resources and practise the breathing technique with self-recording. The therapist gives homework to participants after each session and emphasizes the importance of completing it daily and putting the acquired knowledge into practice.

Session 2: psychoeducation (II) and relaxation The objective of this session is to talk about the nervous system and the links between stress, coping, emotions, and health, as well as how to reduce psychophysiological activation through emotional self-regulation strategies.

This and the following sessions begin with a summary of the previous one and a review of the homework. The therapist discusses stress (i.e., definitions, theoretical models, phases, psychosomatic symptoms, and coping), the link between cognition and emotion, and presents strategies designed to downregulate the magnification and attention biases referred to in Session 1. Next, the diaphragmatic breathing technique is reviewed and practised, and progressive muscle relaxation is introduced as a useful emotional self-regulation strategy. The homework is given at the end: daily practice and self-recording of both diaphragmatic breathing and progressive muscle

relaxation and the reading of an introductory document on cognitive therapy.

Session 3: cognitive restructuring (I) The objective of this session is to introduce more emotional self-regulation strategies and teach participants to identify maladaptive thinking styles that generate and/or maintain emotional distress.

After the previous session summary and the review of the homework, participants talk about the usefulness of pleasurable activities and physical exercise. Then, the concept of irrational thinking (and how emotions can influence it) is introduced, and the integrative cognitive restructuring model [46] is explained. It consists of 3 phases: (1) information provided by the therapist regarding the problem (e.g., emotions, cognitions distorted, physiological responses, consequences, and emotional dysregulation problems); (2) self-observation, which implies the learning of complex cognitive concepts (e.g., cognitive biases, metacognition, and dysfunctional schemas), self-perception, and the recording thereof; and (3) cognitive restructuring, that is, training on the analysis and reassessment of threats, attention focus, problem-solving skills and how to improve self-efficacy and self-esteem. Some theoretical models are introduced for motivational purposes: the expectancy model and self-fulfilling prophecy (to illustrate cognition-behaviour interaction) [47] and the theory of attribution [48]. Finally, homework: the practice and self-recording of both relaxation techniques, pleasurable activities, physical exercise, self-observation (i.e., event, situation, cognition, physiological response, emotion, behaviour, and consequences), and the reading of a document on thinking distortions and cognitive biases.

Session 4: cognitive restructuring (II) The objective of this session is to learn how to modify maladaptive thoughts through cognitive restructuring and positive self-instruction and to plan a behavioural experiment.

In this session, cognitive restructuring is practised using the homework self-observations, with an especial focus on the principal interpretational biases. Participants must (1) identify the cognitive processes that generate emotional distress; (2) identify the cognitive mistakes; and (3) turn them into more adaptive and rational thoughts. To encourage the latter, the positive self-instruction model [49] is introduced. The practice and self-recording of relaxation techniques, pleasurable activities, physical exercise, and cognitive restructuring are again given for homework; participants are also asked to design a

personalized behavioural experiment to confront and disconfirm their irrational thoughts.

Sessions 5 and 6: cognitive restructuring (III) and problem-solving These sessions continue with cognitive restructuring with positive self-instruction but behavioural training is now added. The therapist stresses the need to face stimuli that generate distress following successive approximation and reinforcement. This approach, coupled with cognitive restructuring, allows participants to disconfirm irrational beliefs and the anticipated negative consequences that encourage avoidance. The sessions also include several psychological techniques that are taught in the consultation for home practice: self-observation, stimulus control, reinforced behavioural training, exposure without security behaviours, and coping skills. A problem-solving technique [50] is introduced using an example from the group. These sessions are also used to reinforce group achievements and correct mistakes. The homework includes the practice and recording of all techniques learnt so far (i.e., diaphragmatic breathing, progressive muscle relaxation, pleasurable activities, physical exercise, cognitive restructuring, and behavioural experiments).

Session 7: relapse prevention and closing The objective of this session is to review and reinforce the emotional self-regulation and cognitive-behavioural strategies learnt during the intervention. Finally, relapses are discussed not in terms of failure but challenges that have to be worked on, and the various techniques that have been learnt are generalized to other events and situations that may arise in the future.

Individual brief transdiagnostic cognitive-behavioural therapy (individual tCBT)

This is an adaption of the group therapy, with the same phases and the same order. However, since it is an individual intervention, its duration and the associated exercises can be personalized. It consists of a minimum of 6 and a maximum of 8 sessions of 30–60 min and is provided by a clinical psychologist not involved in the assessments.

Treatment as usual (TAU)

Participants in this group will be provided with common primary care treatment by a GP in a face-to-face consultation that seldom lasts more than 10 min. TAU usually consists of pharmacological treatment, though it might also involve practical advice or even no

treatment at all [51]. The first consultation will count as part of the recruitment process and, if the patient agrees to participate in the trial, no therapy will be provided until they are allocated to a group. Once in the TAU intervention, if the practitioner recommends psychological treatment (e.g., referral to specialized care), the participant would be excluded to avoid contamination between clusters. TAU does not comprise a specific number of sessions; it will end when the GP considers the patient recovered.

Therapist training

All the therapists are experienced clinical psychologists who work in the national health system. They study for 4–5 years to obtain a university degree and undergo a residency programme of 4 years to obtain clinical certification. They also undergo standardized training conducted by a supervisor PhD, when they learn the transdiagnostic therapy protocol. The course consists of studying a therapy handbook, four online lessons, and a face-to-face session with the trainer. All therapists will be supervised by a coordinator with whom they will be able to arrange follow-up sessions when they can resolve any doubts they may have during the intervention period.

Outcomes

Primary outcomes are the screening of an ED and its severity. Secondary outcomes are the screening of other non-emotional mental disorders, symptom-related disability level, quality of life (general and health-related), the patient's treatment satisfaction, and certain cognitive factors that have been observed to be common across different mental disorders [28–30]. Changes over time in all variables will be analysed (from pre-treatment to post-treatment and follow-ups) to assess treatment effectiveness. In addition, sociodemographic and medical data will be collected. Medical data will be used to calculate health care costs for cost-effectiveness analyses. Finally, health-related quality of life will be used to calculate the quality-adjusted life years (QALYs) for cost-utility analyses.

Timeline

Table 2 shows the timeline as recommended in the SPIRIT statement [42].

Sample size

We used effect sizes from the previous literature to determine the sample size. Corpas et al.'s primary care RCT [41] compared both group and individual brief tCBT with TAU for emotional disorders and found low to medium effect sizes for all outcomes. Individual effects were larger

Table 2 Study timeline according to SPIRIT Statement [42]

TIMEPOINT	STUDY PERIOD													
	Recruitment	Allocation	Intervention									Post-treatment		
	-t ₁	0	S1	S2	S3	S4	S5	S6	S7	S8	...	Immediately after treatment	6 months	12 months
ENROLMENT:														
Eligibility screen	×													
Informed consent	×													
Allocation		×												
INTERVENTIONS:														
Group tCBT			◆—————◆											
Individual tCBT			◆—————◆- - - -◆											
TAU			◆- - - - -◆											
ASSESSMENTS:														
Primary outcomes														
PHQ-9	×											×	×	×
GAD-7	×											×	×	×
PHQ-PD	×											×	×	×
PHQ-15	×											×	×	×
Secondary outcomes														
SDS	×											×	×	×
WHOQOL-BREF	×											×	×	×
RRS-B	×											×	×	×
PSWQ-A	×											×	×	×
IACTA-PB	×											×	×	×
CDTE	×											×	×	×
CERQ-27	×											×	×	×
MCQ-NB	×											×	×	×
Sociodemographic and medical data	×											×	×	×
EQ-5D-5L	×											×	×	×
Treatment satisfaction												×	×	×
Other outcomes														
PHQ-4	×													
SCID-I	×													
CIDI	×													

CDTE Questionnaire of Cognitive Distortions in Emotional Disorders, CERQ Cognitive Emotion Regulation Questionnaire, CIDI Composite International Diagnostic Interview, EQ-5D-5L 5-dimension, 5-level European Quality of Life scale, GAD Generalized Anxiety Disorder, IACTA-PB Inventory of Cognitive Activity in Anxiety Disorders-Panic Brief subscale, MCQ-NB Metacognitions Questionnaire-Negative Beliefs subscale, PHQ Patient Health Questionnaire, PSWQ-A Penn State Worry Questionnaire-Abbreviated, RRS-B Ruminative Responses Scale-Brooding subscale, SCID-I Structured Clinical Interview for DSM Axis-I Disorders, SDS Sheehan Disability Scale, TAU Treatment as usual, tCBT Transdiagnostic cognitive-behavioural therapy, WHOQOL-BREF WHO Quality of Life scale-Brief version

(Cohen’s *d* ranged from .54 to .74) than group effects (.4 to .63) when compared with TAU; however, there was no significant difference between both transdiagnostic formats, with (very) low effect sizes (.06 to .27). Another primary RCT by Corpas et al. [36] compared tCBT with TAU and found medium to large effect sizes (from .39 for depression to .81 for panic symptoms). Finally, the PsicAP study compared the group tCBT used herein to TAU in primary care. Intention-to-treat analyses showed low to medium effect sizes over time for depression (Morris’ *d* ranged from .36 to .58), anxiety (.38 to .65),

and somatizations (.31 to .4). Subsequently, we decided to assume a medium effect size of .6 (Cohen’s *d*).

Since software to determine sample sizes for linear mixed model analyses was not available, we used the *f* index of G*Power [52]. We assumed an effect size of .3 (the equivalent *f* value); a statistical power (1 - β) of .8; and a significance level (α) of .05, obtaining a required sample size of 111. However, to control withdrawals and take into account the abandonment rates in other similar trials [36, 41], we assumed a dropout rate of 15%, which brought the required sample size to 128.

Recruitment

Participants will be recruited from primary care by their GPs. All patients aged 18–65 who are considered to meet eligibility criteria (based on their previous history of ED, diagnostic criteria, or clinician suspicion) will be encouraged to participate. After signing an informed consent form, the participant will have an appointment with an assessor psychologist, who will administer the measurement tools. If the participant does not meet the criteria, they will be referred back to their GP. If the participant is excluded due to a severe mental illness or a high-level disability, the GP will be advised to refer them to specialized care. Patients will receive no economic compensation for their participation in the trial.

Allocation

The sequence will be generated before recruitment and allocation will be accomplished by a non-assessor investigator using computer software that randomly assigns participants to the three parallel clusters with a 1:1:1 ratio. Participants will receive the allocation information via email.

Blinding

The trial will be single-blinded. Assessors and data managers will be blinded insofar as they will have no knowledge of the treatment allocation and will not be involved in the interventions. However, even though participants will be blinded during the pre-treatment evaluation, they will probably not remain blinded once allocated, since the experimental conditions are qualitatively different. For the same reason, the clinical psychologists who perform the transdiagnostic treatments will not be blinded. Since participants might consult their GPs during the intervention period, they will be asked not to share information concerning their allocation; this will ensure that the GPs are blinded.

Data collection

Primary outcomes

Data regarding mental disorders will be collected through the Patient Health Questionnaire (PHQ) [53], a self-reported version of the PRIME-MD. We will use the subscales of the Díez-Quevedo et al.'s Spanish validated version [54] (except where indicated) to recruit participants and determine the severity of their emotional symptoms.

Depression symptoms Participants will be evaluated using the 9-item PHQ subscale (PHQ-9) [55], which scores the 9 DSM-IV depression criteria present in the previous 2 weeks from 0 (*not at all*) to 3 (*nearly every day*). A score of 10 (at least 5 items rated with 2 [Item 9 also scores 1], and with Item 1 or 2 amongst them) is usually the cut-off point for major depression disorder (MDD): a score of 10–14 indicates minor depression, moderate MDD, or dysthymia; 15–19, moderately severe MDD; and 20–27, severe MDD. This tool has been tested in Spanish primary care centres (McDonald's $\omega = .89$) [56], when 10 was validated as the cut-off point for MDD screening (a sensitivity of 95% and a specificity of 67%).¹

Anxiety symptoms The 7-item Generalized Anxiety Disorder scale (GAD-7) [57] assesses common anxiety symptoms for the previous 2 weeks from 0 (*not at all*) to 3 (*nearly every day*). Cut points of 5, 10, and 15 represent mild, moderate, and severe anxiety, respectively. The algorithm sets 8 as the cut-off point for GAD, though it has been found that a score of 10 is more optimal [57]. We will use the version validated by García-Campayo et al. [58]. This was tested recently in primary care centres (Cronbach's $\alpha = .83$) [59], when 10 was confirmed as the best GAD screening criterion (a sensitivity of 87% and a specificity of 78%).

Panic symptoms Since panic attacks can appear with any mental disorder (not just anxiety) [60], these symptoms should be measured separately. The Panic Disorder PHQ subscale (PHQ-PD) [61] is the specific panic disorder module of the PHQ and scores each DSM-IV criterion as *yes* or *no*. Muñoz-Navarro et al. [62] tested it in Spanish primary care settings and modified the original algorithm to increase the sensitivity for PD diagnosis: the most optimal cut-off point for screening purposes was 5 (the first item [for panic screening] and one of the following 3, plus 4 somatic symptoms; a sensitivity of 77% and a specificity of 72%).

Somatization The 15-item PHQ subscale (PHQ-15) [63] is the somatization module of the PHQ. It scores symptoms present in the previous 4 weeks from 0 (*not bothered at all*) to 2 (*bothered a lot*). It includes 13 somatic symptoms plus 2 from the PHQ-9 (sleeping problems and fatigue); cut points 5, 10, and 15 represent low, medium, and high somatic symptom severity, respectively. However, whereas the original algorithm requires a score of at least 2 in 3 or more somatic symptoms to screen a somatization disorder (a sensitivity of 78% and a specificity of 71%) [64], the cut-off point usually used is 10, as it is in the PHQ-9 and the GAD-7 [65];

¹ Twelve was found as the most appropriate cut-off point in Spanish primary care population [56]; however, since this is based on a single study, we decided to use 10 as it is the most used cut-off point.

nevertheless, since this number can be obtained with 10 symptoms rated with the minimum severity, we decided to join both criteria. Furthermore, although an absence of biological cause is also often required (since PHQ-15 does not distinguish between medically explained and unexplained symptoms) [63], the self-administered nature of the PHQ-15 makes it difficult for the subject to determine this. This tool has been validated with Spanish psychiatric outpatients ($\alpha = .78$) [66].

Secondary outcomes

Eating disorders and alcohol abuse The PHQ can also be used to measure the presence of other mental disorders. The Spanish version [54] detects eating disorders such as bulimia nervosa or binge eating disorder (a sensitivity of 92% and a specificity of 98%) and alcohol abuse (a sensitivity of 76% and a specificity of 99%). Affirmative answers to Items 6a to 6c and 8 indicate bulimia nervosa; a negative answer (or no answer at all) for Item 8 points to a binge eating disorder. An affirmative answer to either Item 10a to 10e indicates alcohol abuse. In any of these cases, the patient would be interviewed by a clinical psychologist to confirm a possible diagnosis of eating, alcohol, or personality disorder.

Level of impairment The Sheehan Disability Scale (SDS) [67] is a self-administered test that measures subjective symptom-related impairment with 5 11-point Likert items. The first 3 items rate key areas in the previous month: work, social life/leisure activities, and family life/home responsibilities. Two additional items assess stress level and perceived social support in the previous week. We will use the Spanish version developed by Bobes et al. [68] because it has shown good properties in primary care populations ($\alpha = .83$) [69]. One, 4, and 7 are the cut points for mild, moderate, and high disability, respectively.

General quality of life Psychological, physical, social, and environmental domains will be assessed through the 26 5-point Likert items of the World Health Organization Quality of Life Instrument-Brief (WHOQOL-BREF) [70], the abbreviated version of the 100-item WHOQOL (WHOQOL-100) [71]. The more the participant scores, the better quality of life. The WHOQOL has been validated in Spanish populations [72, 73] and has shown good psychometric properties ($\alpha > .7$) in psychological, physical, and environmental domains, though its internal consistency in social domains has varied from .58 [73] to .75 [72].

Ruminative thinking The 22-item Ruminative Responses Scale (RRS) [74] was originally developed to measure ruminative responses to depressed mood. It has been validated in a Spanish population [75]; however, only the 5-item brooding factor subscale (RRS-B) will be used in the proposed trial ($\alpha = .79$) [76]. The RRS-B scores how often the participant thinks as described in each item (1 = *almost never* to 4 = *almost always*) when they are discouraged, sad, or depressed.

Worry The Penn State Worry Questionnaire (PSWQ) [77] measures pathological worry as an uncontrollable and general state (i.e., as a GAD feature). It has been validated in Spain [78]. The proposed study will use an 8-item abbreviated version (PSWQ-A) [79] that has already shown good properties in primary care ($\alpha = .9$) [76]. The PSWQ-A items rate how far worries affect the person (1 = *not at all typical of me* to 5 = *very typical of me*).

Attentional and interpretational biases The Inventory of Cognitive Activity in Anxiety Disorders (IACATA) was originally developed by Cano-Vindel [80]. It includes several subscales that assess distortions according to Eysenck's four-factor theory [81]. The 5-item, abbreviated panic version, the IACATA-Panic Brief (IACATA-PB; $\alpha = .87$) [76] will be used to measure attentional biases. It scores how often the participant has certain cognitive distortions (0 = *almost never* to 4 = *almost always*). In addition, we will use the Questionnaire of Cognitive Distortions in Emotional Disorders (CDTE) [The PsicAP Group: Cuestionario de Distorsiones Cognitivas en Trastornos Emocionales, unpublished], an under-review tool that scores the frequency of certain cognitive biases in the main EDs (i.e., MDD, GAD, PD, and somatization disorder) from 0 (*almost never*) to 4 (*almost always*). It includes 16 items that measure the presence of four factors: sustained attention bias ($\alpha = .96$); divided attention bias ($\alpha = .95$); magnification interpretational bias ($\alpha = .94$); and catastrophization interpretational bias ($\alpha = .96$), with high levels of discriminant validity amongst the four EDs (ROC values $> .8$).

Emotion regulation strategies The 36-item Cognitive Emotion Regulation Questionnaire (CERQ-36) [82] measures the specific cognitive emotion regulation strategies a person uses to face a stressful event. It scores how often the participant thinks as described (1 = *almost never* to 5 = *almost always*). The CERQ has been validated in a Spanish population [83]; the 18-item shortened version [84] will be used in the proposed study (α values range from .84 [*adaptive*] to .72 [*less adaptive*]).

Metacognitions The 30-item Metacognitions Questionnaire (MCQ-30) [85] is a short version of the original MCQ [86], which measures beliefs about one's own thinking processes. It has been validated in a Spanish population [87]. In the proposed trial, the 6-item *negative beliefs* (concerning uncontrollability/danger) subscale (MCQ-NB; $\alpha = .82$) will be used [76]. This scores how far the patient agrees with the sentences presented to them (1 = *totally disagree* to 4 = *totally agree*).

Participant data and treatment satisfaction An ad hoc questionnaire will be used to collect socio-demographic (gender, age, civil status, educative level, employment situation, and income level) and ED-related medical data (public and private health care consultations, accidents, medical tests, and sick leave in the previous 3 months, psychotropic drugs or other medications, and their posology). It includes an additional question about treatment satisfaction (at post-treatment and follow-ups). Medical records will be also consulted (though, for privacy reasons, only strictly necessary data will be collected).

Cost and utility data The medical data collected above will also be used for cost calculations. In addition, cost-utility will be measured through the European Quality of Life Scale (EuroQoL, EQ) [88]. The Spanish version of the 5-domain, 5-level EuroQol (EQ-5D-5L) [89, 90] will be used to calculate the QALYs. The EQ-5D-5L measures 5 domains of health-related quality of life (mobility, self-care, daily activities, pain/unease, and anxiety/depression) through 5 severity levels (*no problems, slight problems, moderate problems, severe problems, and extreme problems*). This makes it possible to establish up to 3125 different health states, each of which can be represented through an index value that reflects the health state quality contextualized in the person's country/region. It also includes a visual analogue scale (VAS) that scores the respondent's current subjective, general health state from 0 to 100. For more information, see van Reenen et al. [90].

Collection process

First, the 4-item PHQ ultra-brief subscale (PHQ-4) [91] will be used for the recruitment phase. The PHQ-4 gathers 2 items from the PHQ-2 and 2 from the GAD-2 (short versions of the PHQ-9 and GAD-7, respectively). It has been used in a Spanish primary care population (Spearman-Brown's $\rho_{\text{PHQ-4}} = .72$; $\rho_{\text{PHQ-2}} = .86$; $\rho_{\text{GAD-2}} = .76$) [92]. A score greater than or equal to 3 would indicate the need for additional assessment (PHQ-2: a sensitivity of 90% and a specificity of 61%; GAD-2: a sensitivity of 88% and a specificity of 61%). It can be an extremely useful

tool, as it helps to accelerate the screening process. It has been suggested, however, that both PHQ-2 and GAD-2 sum scores should be regarded separately in primary care samples [92]. The first item from the PHQ-PD has been added to screen panic disorder.

Second, depression, anxiety, panic, and somatizations will be assessed through the PHQ subscales mentioned above. If a participant scores as having a severe ED (depressive or anxiety disorder) or a non-emotional mental illness, or if the diagnosis is not clear, they will undergo a second evaluation with a gold-standard tool. The Structured Clinical Interview for DSM Axis-I Disorders (SCID-I) [93] will be used to assess panic and depression disorders and the Composite International Diagnostic Interview (CIDI) [94] will be used for GAD (since the former may not be adequate as it only includes one item for GAD). If these tools confirm the PHQ results, the patient will be referred to their GP, who will refer them to specialized care. The same will apply to those who score high in the SDS. All measures, except the PHQ-4, the SCID-I, the CIDI, and the treatment satisfaction question, will be collected at baseline, immediately after treatment, and 6 and 12 months later (see Table 2). Data will be also collected from medical records for the 3 months before participation in the study. To facilitate completion, the questionnaires may be answered in person, by email, online, or by phone.

To reduce the number of withdrawals, the clinical psychologists will telephone the participants to encourage them to continue with the treatment and/or to participate in the follow-up assessments. People who drop out of the intervention will still be invited to complete the questionnaires, especially at the first post-treatment assessment (immediately after the intervention).

Data management

Scores from both electronic and paper questionnaires will be tabulated in SPSS Statistics. Data from the online instruments will be exported to SPSS.

Statistical methods

Analysis of clinical effectiveness

Data analysis will be carried out using SPSS Statistics. Effectiveness-related data will be analysed using intention-to-treat and per-protocol approaches. After the homogeneity of intra- and inter-groups is checked, changes over time (baseline, post-intervention, and follow-ups) in primary and secondary outcomes will be analysed using linear mixed models (LMMs), since this method has been recommended rather than ANOVA or MANOVA analyses because LMMs do not require participants with missing values to be omitted nor imputed, and they are more adequate for repeated measures [95].

Likewise, effect sizes (Cohen's d with bias corrections) will be calculated, as well as their accuracy (by taking into account the number of treatment sessions). The percentage of patients in each cluster who experience a 50% decrease in the number of clinical symptoms and scores to one standard deviation and the percentage of cases with a probable ED before and after receiving treatment (according to cut-off criteria) will be calculated. Therapeutic success criteria will be determined by obtaining post-intervention means significantly lower ($p \leq .05$) and medium/large effect sizes significantly higher than those of the controls, especially in the ED scores. Clusters will be also compared regarding impairment, quality of life, emotion regulation biases, and satisfaction with treatment.

Cost analysis

Cost-related data will be collected through medical records and ad hoc questionnaires, from 3 months before inclusion in the study to 12 months after the intervention. Direct costs will be calculated by adding the ED-related costs due to medication use (antidepressants, anxiolytics, hypnotics, and sedatives), medical tests and other health services, and health personnel (primary/specialized care and public/private care). Medication costs will be calculated by multiplying price per milligram (€/mg) according to the Vademecum International (including VAT) [96] by the daily dose (mg) and the number of days of drug treatment. Cost data relating to medical tests and the use of health services will be obtained through the fee information published on the Andalusian Health Service's official website [97]. Since a group psychotherapy session does not have a specific tariff, it will be considered as a GP consultation without medical tests because GPs and clinical psychologists have similar basic salaries [98]. Indirect costs will be calculated by multiplying the days of ED-related sick leave by the participant's current daily minimum salary; the expense of replacement workers will also be factored in when incurred. Total costs will be obtained by summing direct and indirect costs.

Analyses of cost-effectiveness and cost-utility

Cost-effectiveness analysis will be conducted by calculating incremental cost-effectiveness ratios (ICERs), which are defined as the difference in mean costs between interventions divided by the difference in their effectiveness according to the participants' mean scores (i.e., one ICER per each comparison between two clusters and per each instrument). However, cost-effectiveness analyses are open to question since they rate the more appropriate intervention based only on the clinical perspective. Cost-utility analyses use the intervention health-related utilities, subjectively rated by participants. Therefore,

they depend on a social perspective, that is, the participants express their preferences based on the value they assign to their health status. The EQ-5D-5L will be used to calculate those utilities as QALYs, and the latter will be used to obtain the incremental cost-utility ratios (ICURs), defined as the difference in mean costs divided by the difference in mean QALYs (i.e., one ICUR per each comparison between two clusters). Since follow-ups will not go beyond 12 months post-intervention, neither costs nor results will be subject to discount. The bootstrapping method (a resampling method) will be used to obtain more accurate ICERs and ICURs. Missing data will be analysed through Student's t and χ^2 tests for ED severity level, sex, and age; this will allow us to know whether missing data due to dropout are related to chance. Finally, a sensitivity analysis will be carried out to test the robustness of cost-effectiveness and cost-utility results.

Monitoring

The proposed trial has no data monitoring committee since the potential harms are limited to the pharmacological treatment that is ordinarily provided in primary care. Study progress will be supervised through regular contacts and meetings between the intervention professionals and the principal investigator. All updates will be published through the online registers: ClinicalTrials.gov (NCT04847310) and Protocols.io (bx2npqde).

Discussion

This protocol tries to combine the strengths of the PsiBrief and the PsicAP projects. The large PsicAP project [34, 35] studied a brief group transdiagnostic intervention as a more cost-effective possibility for ED treatment in primary care; however, as has been noted, group therapy is less flexible (and less popular amongst patients) than individual therapy (which allows for stronger therapeutic relationships). Meanwhile, the PsiBrief project [40, 41], which introduced individual therapy, saw a high attrition rate, so follow-ups were not possible. Also, it did not include cost-benefit analyses. The proposed study will try to combine the best of each of these projects, comparing the cost-effectiveness and cost-utility of both group and individual transdiagnostic therapy with TAU in primary care.

Based on PsiBrief and PsicAP's results, we hypothesize that our proposed experimental interventions will be equally effective in reducing emotional symptoms and improving emotion regulation strategies, and TAU will be the least effective. Since group therapy involves several patients with different symptoms, we hypothesize that it will have the best outcomes in terms of cost-effectiveness and cost-utility, and TAU the worst. Finally, we hypothesized that these results will be sustained in the follow-ups.

Anticipated limitations

We recognize that our protocol has several limitations, and we expect difficulties in its execution. First, the trial design excludes some groups to minimize confusion variables (minors, older people, and patients with severe mental disorders and/or with intellectual, legal, or high functional disability), so additional research will have to be carried out on these populations; and the single-blind approach will not allow us to control patients' therapy expectations, though participant blinding is ordinarily not feasible in RCTs that compare psychotherapies.

Second, we might encounter obstacles during recruitment. In the first phase, the great care saturation faced by GPs (i.e., they have to deal with great numbers of patients in a short time) might make enrolment difficult; moreover, since there has never been a psychotherapy culture in primary care, some of them might have little motivation to collaborate. In the second phase, the main limitation might be the measurement tools. Brief instruments have been included in the protocol because primary care requires rapid assessment; however, they do not have the same diagnostic accuracy as gold-standard tools such as the SCID. Furthermore, because these questionnaires are self-administered, completion and the veracity of answers are less controlled than clinical interviews. Nonetheless, the tools included have been validated and tested in Spanish primary care, and they accelerate the diagnostic process in clinical practice.

Third, the interventions might have limitations. For example, each treatment may have a different duration, especially TAU, so this might impact effectiveness (though we will consider this in our analyses). Also, each intervention will be carried by different personnel (i.e., GPs and clinical psychologists), so this might affect the results. In addition, TAU might generate expectations in participants, and they cannot be feasibly blinded. An alternative may be sham therapy, but TAU is closer to clinical reality, so it provides better external validity. The level of adherence to the protocol is another difficulty envisaged, though the therapists will be supervised by PhD trainers during the treatment period.

Finally, this kind of trial risks a high dropout rate and missing data, especially at follow-ups. Unlike the IAPT programme, the proposed study will not take session-by-session measurements, because the number of instruments we are using would make it difficult. We hope, therefore, that the clinical psychologists will encourage participants to complete the measurements through regular telephone calls. Finally, due to the duration of the study, intervention and measurements might be affected by patients' availability (holidays, medical appointments, and so on), but we will make an effort to ensure that timings are similar between groups.

Future directions

If our results show the economic feasibility of including psychotherapy in primary care, they may help to change health care policies and implement empirically-supported psychological treatments following a stepped-care model. Patients with mild to moderate conditions would be treated in primary care and those with severe mental disorders would be referred to specialized care involving more intensive therapies that combine psychological and pharmacological approaches. As a result, primary care resources would be optimized, waiting lists would be unblocked, and patients would spend less time of their lives with their disability. Once such a model is implemented, the next step might be the development of internet-based psychotherapies through the use of websites or apps, which may be more cost-effective and accessible for some people.

However, even though empirically-supported psychotherapies may improve patients' symptoms and quality of life, they cannot reduce prevalence rates; only prevention can do that. Investment is needed both in psychological treatment and prevention. If we can resolve people's mental problems before they become disorders, we might save not only costs but also a great deal of suffering.

Protocol status

This project started in September 2021.

Abbreviations

ED: Emotional disorder; CBT: Cognitive-behavioural therapy; CDTE: Questionnaire of Cognitive Distortions in Emotional Disorders; CERQ: Cognitive Emotion Regulation Questionnaire; CID: Composite International Diagnostic Interview; DDD: Defined daily doses (per 1000 inhabitants); DSM: Diagnostic and Statistical Manual of Mental Disorders; EQ-5D-5L: 5-domain, 5-level European Quality of Life Scale; GAD: Generalized anxiety disorder; GP: General practitioner; IACTA-PB: Inventory of Cognitive Activity in Anxiety Disorders-Panic Brief version; IAPT: Improving Access to Psychological Therapies; ICD: International Classification of Diseases; ICER: Incremental cost-effectiveness ratio; ICUR: Incremental cost-utility ratio; LMM: Linear mixed models; MCQ-NB: Metacognitions Questionnaire-Negative Beliefs subscale; MDD: Major depression disorder; NICE: National Institute for Health and Care Excellence; OECD: Organisation for Economic Co-operation and Development; PD: Panic disorder; PHQ: Patient Health Questionnaire; PSWQ-A: Penn State Worry Questionnaire-Abbreviated; QALY: Quality-adjusted life year; RCT: Randomized controlled trial; RRS-B: Ruminative Responses Scale-Brooding subscale; SCID: Structured Clinical Interview for DSM; SDS: Sheehan Disability Scale; TAU: Treatment as usual; tCBT: (brief) transdiagnostic cognitive-behavioural therapy; UP: Unified Protocol for the Transdiagnostic Treatment of Emotional Disorders; WHOQOL: World Health Organization Quality of Life Instrument.

Supplementary Information

The online version contains supplementary material available at <https://doi.org/10.1186/s12888-022-03726-4>.

Additional file 1.

Acknowledgements

Not applicable.

Authors' contributions

ACV, JAM, EM, MGL, and JC are responsible for the conception of the project. JAM and ACV are the coordinators. ACV, JAM, CGB, MGL, FC, JC, RMN, PRR, AAM, SBM, MPV, and MCG contributed to the study design and materials. JFV is the principal supervisor of the psychotherapists that carry out the interventions. FC, FGT, EM, JC, and FJJG are responsible for the collection of data. AAM, FJJG, MGL, FGT, and JAM will analyse and interpret the data. AAM was the major contributor in writing the manuscript. All authors read and approved this manuscript.

Funding

This RCT is funded by a grant from the Government of Spain (Ministry of Science, Innovation and Universities) (PID2019-107243RB-C22). The funding body is not involved in any phase of the project.

Availability of data and materials

Datasets generated and analysed during the proposed study will be available from the corresponding author on reasonable request.

Declarations

Ethics approval and consent to participate

This project (ID: PID2019-107243RB-C22) was approved by the Investigation Ethics Committee (no. 4839) of the Province of Cordoba on January 2021. All professionals who will be collaborating in the proposed study gave their written agreement to adhere to the Helsinki Declaration and Spanish law. Participants will give their written informed consent before their inclusion in the study. All information will be treated in accordance with Spanish data security law. Data will be stored in a protected central server, and only direct members of the study team will be able to access them.

Consent for publication

Not applicable.

Competing interests

The authors and the sponsor do not have any competing interests to declare.

Author details

¹Department of Psychology, Faculty of Education Sciences, University of Cordoba, C/ San Alberto Magno, s/n, 14071 Cordoba, Spain. ²Maimónides Biomedical Research Institute of Cordoba, Reina Sofia University Hospital, C/ San Alberto Magno, s/n, 14071 Cordoba, Spain. ³Department of Personality, Assessment and Psychological Treatments, Faculty of Psychology and Speech Therapy, University of Valencia, Av. Blasco Ibáñez, 21, 46010 Valencia, Spain. ⁴Valdecilla Biomedical Research Institute (IDIVAL), Marqués de Valdecilla University Hospital, Av. Valdecilla, 25, 39008 Santander, Spain. ⁵Castilla La Nueva Primary Care Centre, Health Service of Madrid, C/ Teruel, 4, 28941 Fuenlabrada, Spain. ⁶Department of Experimental Psychology, Faculty of Psychology, Complutense University of Madrid, Campus de Somosaguas, s/n, 28223 Madrid, Spain.

Received: 10 January 2022 Accepted: 22 January 2022

Published online: 09 February 2022

References

- Wittchen H-U, Jacobi F. Size and burden of mental disorders in Europe—a critical review and appraisal of 27 studies. *Eur Neuropsychopharmacol*. 2005;15(4):357–76.
- Steel Z, Marnane C, Iranpour C, Chey T, Jackson JW, Patel V, et al. The global prevalence of common mental disorders: a systematic review and meta-analysis 1980–2013. *Int J Epidemiol*. 2014;43(2):476–93.
- Global Burden of Disease Collaborative Network. Global Burden of Disease Study 2019 (GBD 2019) Results. Institute for Health Metrics and Evaluation (IHME). 2020; Available from: <http://ghdx.healthdata.org/gbd-results-tool>.
- Valiente C, Contreras A, Peinado V, Trucharte A, Martínez AP, Vázquez C. Psychological adjustment in Spain during the COVID-19 pandemic: positive and negative mental health outcomes in the general population. *Span J Psychol*. 2021;24:e8.
- Centro de Investigaciones Sociológicas. Encuesta sobre la salud mental de los/as españoles/as durante la pandemia de la COVID-19: avance de resultados. 2021. Available from: http://www.cis.es/cis/export/sites/default/-Archivos/Marginales/3300_3319/3312/es3312mar.pdf
- Bellón JÁ, Conejo-Cerón S, Rodríguez-Bayón A, Ballesta-Rodríguez MI, Mendive JM, Moreno-Peral P. Enfermedades mentales comunes en atención primaria: dificultades diagnósticas y terapéuticas, y nuevos retos en predicción y prevención. *Informe SESPAS 2020. Gac Sanit*. 2020;34(5):20–6.
- Mitchell AJ, Vaze A, Rao S. Clinical diagnosis of depression in primary care: a meta-analysis. *Lancet*. 2009;374:609–19.
- Olariu E, Forero CG, Castro-Rodríguez JI, Rodrigo-Calvo MT, Álvarez P, Martín-López LM, et al. Detection of anxiety disorders in primary care: a meta-analysis of assisted and unassisted diagnoses. *Depress Anxiety*. 2015;32(7):471–84.
- Murray AM, Toussaint A, Althaus A, Löwe B. The challenge of diagnosing non-specific, functional, and somatoform disorders: a systematic review of barriers to diagnosis in primary care. *J Psychosom Res*. 2016;80:1–10.
- Chisholm D, Sweeny K, Sheehan P, Rasmussen B, Smit F, Cuijpers P, et al. Scaling-up treatment of depression and anxiety: a global return on investment analysis. *Lancet Psychiatry*. 2016;3(5):415–24.
- Organisation for Economic Cooperation and Development. Health at a Glance 2019: OECD Indicators. Paris; 2019. (Health at a Glance).
- Agencia Española de Medicamentos y Productos Sanitarios. Utilización de medicamentos ansiolíticos e hipnóticos en España durante el período 2010–2019. Spain; 2021. Available from: <https://www.aemps.gob.es/medicamentos-de-uso-humano/observatorio-de-uso-de-medicamentos/informes-ansioliticos-hipnoticos-espana-2010-2018/>
- Hollon SD, Cohen ZD, Singla DR, Andrews PW. Recent developments in the treatment of depression. *Behav Ther*. 2019;50(2):257–69.
- Whiteford HA, Degenhardt L, Rehm J, Baxter AJ, Ferrari AJ, Erskine HE, et al. Global burden of disease attributable to mental and substance use disorders: findings from the global burden of disease study 2010. *Lancet*. 2013;382(9904):1575–86.
- Ruiz-Rodríguez P, Cano-Vindel A, Muñoz Navarro R, Medrano L, Moriana JA, Buiza Aguado C, et al. Impacto económico y carga de los trastornos mentales comunes en España: una revisión sistemática y crítica. *Ansiedad y Estrés*. 2017;23(2–3):118–23.
- National Institute for Health and Care Excellence. Common mental health problems: identification and pathways to care. 2011. Available from: www.nice.org.uk/guidance/cg123
- Cuijpers P, Sijbrandij M, Koole SL, Andersson G, Beekman AT, Reynolds CF. The efficacy of psychotherapy and pharmacotherapy in treating depressive and anxiety disorders: a meta-analysis of direct comparisons. *World Psychiatry*. 2013;12(2):137–48.
- Cuijpers P, Quero S, Dowrick C, Arroll B. Psychological treatment of depression in primary care: recent developments. *Curr Psychiatry Rep*. 2019;21(129).
- McHugh RK, Whitton SW, Peckham AD, Welge JA, Otto MW. Patient preference for psychological vs pharmacologic treatment of psychiatric disorders: a meta-analytic review. *J Clin Psychiatry*. 2013;74(6):595–602.
- Cape J, Whittington C, Buszewicz M, Wallace P, Underwood L. Brief psychological therapies for anxiety and depression in primary care: meta-analysis and meta-regression. *BMC Med*. 2010;8(38).
- Clark DM. Realizing the mass public benefit of evidence-based psychological therapies: the IAPT program. *Annu Rev Clin Psychol*. 2018;14:159–83.
- Wakefield S, Kellett S, Simmonds-Buckley M, Stockton D, Bradbury A, Delgado J. Improving access to psychological therapies (IAPT) in the United Kingdom: a systematic review and meta-analysis of 10-years of practice-based evidence. *Br J Clin Psychol*. 2021;60(1):1–37.
- Cromarty P, Drummond A, Francis T, Watson J, Battersby M. NewAccess for depression and anxiety: adapting the UK improving access to psychological therapies program across Australia. *Australas Psychiatry*. 2016;24(5):489–92.
- Knapstad M, Lervik LV, Sæther SMM, Aarø LE, Smith ORF. Effectiveness of Prompt mental health care, the Norwegian version of improving access to psychological therapies: a randomized controlled trial. *Psychother Psychosom*. 2020;89(2):90–105.
- Naeem F, Pikard J, Rao S, Ayub M, Munshi T. Is it possible to provide low-intensity cognitive behavioral treatment (CBT lite) in Canada without

- additional costs to the health system? First-year evaluation of a pilot CBT lite program. *Int J Ment Health*. 2017;46(4):253–68.
26. Hepgul N, King S, Amarasinghe M, Breen G, Grant N, Grey N, et al. Clinical characteristics of patients assessed within an Improving Access to Psychological Therapies (IAPT) service: Results from a naturalistic cohort study (Predicting Outcome Following Psychological Therapy; PROMPT). *BMC Psychiatry*. 2016;16(52).
 27. Barlow DH, Sauer-Zavala S, Carl JR, Bullis JR, Ellard KK. The nature, diagnosis, and treatment of neuroticism: Back to the future. *Clin Psychol Sci*. 2014;2(3):344–65.
 28. Aldao A, Nolen-Hoeksema S, Schweizer S. Emotion-regulation strategies across psychopathology: a meta-analytic review. *Clin Psychol Rev*. 2010;30(2):217–37.
 29. McEvoy PM, Watson H, Watkins ER, Nathan P. The relationship between worry, rumination, and comorbidity: evidence for repetitive negative thinking as a transdiagnostic construct. *J Affect Disord*. 2013;151(1):313–20.
 30. Sun X, Zhu C, So SHW. Dysfunctional metacognition across psychopathologies: a meta-analytic review. *Eur Psychiatry*. 2017;45:139–53.
 31. Newby JM, McKinnon A, Kuyken W, Gilbody S, Dalgleish T. Systematic review and meta-analysis of transdiagnostic psychological treatments for anxiety and depressive disorders in adulthood. *Clin Psychol Rev*. 2015;40:91–110.
 32. Pearl SB, Norton PJ. Transdiagnostic versus diagnosis specific cognitive behavioural therapies for anxiety: a meta-analysis. *J Anxiety Disord*. 2017;46:11–24.
 33. Carlucci L, Saggino A, Balsamo M. On the efficacy of the unified protocol for transdiagnostic treatment of emotional disorders: a systematic review and meta-analysis. *Clin Psychol Rev*. 2021;87:101999.
 34. Cano-Vindel A, Muñoz-Navarro R, Wood CM, Limonero JT, Medrano LA, Ruiz-Rodríguez P, et al. Transdiagnostic cognitive behavioral therapy versus treatment as usual in adult patients with emotional disorders in the primary care setting (PsicAP study): protocol for a randomized controlled trial. *JMIR Res Protoc*. 2016;5(4):e246.
 35. Cano-Vindel A, Muñoz-Navarro R, Moriana JA, Ruiz-Rodríguez P, Medrano LA, González-Blanch C. Transdiagnostic group cognitive behavioural therapy for emotional disorders in primary care: the results of the PsicAP randomized controlled trial. *Psychol Med*. 2021;8:1–13.
 36. Corpas J, Moriana JA, Venceslá JF, Gálvez-Lara M. Effectiveness of brief group transdiagnostic therapy for emotional disorders in primary care: a randomized controlled trial identifying predictors of outcome. *Psychother Res*. 2021;1–14.
 37. Huntley AL, Araya R, Salisbury C. Group psychological therapies for depression in the community: systematic review and meta-analysis. *Br J Psychiatry*. 2012;200(3):184–90.
 38. Shechtman Z, Kiezel A. Why do people prefer individual therapy over group therapy? *Int J Group Psychother*. 2016;66(4):571–91.
 39. Baier AL, Kline AC, Feeny NC. Therapeutic alliance as a mediator of change: a systematic review and evaluation of research. *Clin Psychol Rev*. 2020;82:101921.
 40. Gálvez-Lara M, Corpas J, Venceslá JF, Moriana JA. Evidence-based brief psychological treatment for emotional disorders in primary and specialized care: study protocol of a randomized controlled trial. *Front Psychol*. 2019;9(2674).
 41. Corpas J, Moriana JA, Venceslá JF, Gálvez-Lara M. Brief psychological treatments for emotional disorders in primary and specialized care: a randomized controlled trial. *Int J Clin Heal Psychol*. 2021;21(1):100203.
 42. Chan AW, Tetzlaff JM, Gøtzsche PC, Altman DG, Mann H, Berlin JA, et al. SPIRIT 2013 explanation and elaboration: guidance for protocols of clinical trials. *BMJ*. 2013;346:1–42.
 43. González-Blanch C, Umaran-Alfageme O, Cordero-Andrés P, Muñoz-Navarro R, Ruiz-Rodríguez P, Medrano LA, et al. Tratamiento psicológico de los trastornos emocionales en Atención Primaria: el manual de tratamiento transdiagnóstico del estudio PsicAP. *Ansiedad y Estrés*. 2018;24(1):1–11.
 44. Barlow DH, Farchione TJ, Fairholme CP, Ellard KK, Boisseau CL, Allen LB, et al. Protocolo Unificado para el Tratamiento Transdiagnóstico de los Trastornos Emocionales [Unified Protocol for Transdiagnostic Treatment of Emotional Disorders: Therapist Guide and Patient Guide]. 1st ed. Alianza; 2015.
 45. Cano-Vindel A. Desórdenes emocionales en Atención Primaria. Available from: <http://www.desordenesemocionales.es/>
 46. Cano-Vindel A, Dongil-Collado E, Salguero JM, Wood CM. Intervención cognitivo-conductual en los trastornos de ansiedad: una actualización. *Inf psicológica*. 2011;102:4–27.
 47. Rosenthal R. On the social psychology of self-fulfilling prophecy: further evidence for Pygmalion effects and their mediating mechanisms. New York: MSS Modular Publications; 1974.
 48. Weiner B. Attribution theory and attributional therapy: some theoretical observations and suggestions. *Br J Clin Psychol*. 1988;27(1):99–104.
 49. Meichenbaum D. Cognitive behaviour modification. *Scand J Behav Ther*. 1977;6(4):185–92.
 50. D'Zurilla TJ, Goldfried MR. Problem solving and behavior modification. *J Abnorm Psychol*. 1971;78(1):107–26.
 51. Watts SE, Turnell A, Kladnitski N, Newby JM, Andrews G. Treatment-as-usual (TAU) is anything but usual: a meta-analysis of CBT versus TAU for anxiety and depression. *J Affect Disord*. 2015;175:152–67.
 52. Faul F, Erdfelder E, Lang A-G, Buchner A. G*Power 3: a flexible statistical power analysis program for the social, behavioral, and biomedical sciences. *Behav Res Methods*. 2007;39(2):175–91.
 53. Spitzer RL, Kroenke K, Williams JBW. Patient health questionnaire primary care study group. Validation and utility of a self-report version of PRIME-MD: the PHQ primary care study. *JAMA*. 1999;282(18):1737–44.
 54. Díez-Quevedo C, Rangil T, Sánchez-Planell L, Kroenke K, Spitzer RL. Validation and utility of the patient health questionnaire in diagnosing mental disorders in 1003 general hospital Spanish inpatients. *Psychosom Med*. 2001;63(4):679–86.
 55. Kroenke K, Spitzer RL, Williams JBW. The PHQ-9: validity of a brief depression severity measure. *J Gen Intern Med*. 2001;16(9):606–13.
 56. Muñoz-Navarro R, Cano-Vindel A, Medrano LA, Schmitz F, Ruiz-Rodríguez P, Abellán-Maeso C, et al. Utility of the PHQ-9 to identify major depressive disorder in adult patients in Spanish primary care centres. *BMC Psychiatry*. 2017;17(291).
 57. Spitzer RL, Kroenke K, Williams JBW, Löwe B. A brief measure for assessing generalized anxiety disorder: the GAD-7. *Arch Intern Med*. 2006;166(10):1092–7.
 58. García-Campayo J, Zamorano E, Ruiz MA, Pardo A, Pérez-Páramo M, López-Gómez V, et al. Cultural adaptation into Spanish of the generalized anxiety disorder-7 (GAD-7) scale as a screening tool. *Health Qual Life Outcomes*. 2010;8(8).
 59. Muñoz-Navarro R, Cano-Vindel A, Moriana JA, Medrano LA, Ruiz-Rodríguez P, Agüero-Gento L, et al. Screening for generalized anxiety disorder in Spanish primary care centers with the GAD-7. *Psychiatry Res*. 2017;256:312–7.
 60. American Psychiatric Association. Guía de consulta de los criterios diagnósticos del DSM-5. Arlington: American Psychiatric Publishing; 2014.
 61. Wittkampf KA, Baas KD, Van Weert HC, Lucassen P, Schene AH. The psychometric properties of the panic disorder module of the patient health questionnaire (PHQ-PD) in high-risk groups in primary care. *J Affect Disord*. 2011;130(1–2):260–7.
 62. Muñoz-Navarro R, Cano-Vindel A, Wood CM, Ruiz-Rodríguez P, Medrano LA, Limonero JT, et al. The PHQ-PD as a screening tool for panic disorder in the primary care setting in Spain. *Plos One*. 2016;11(8):e0161145.
 63. Kroenke K, Spitzer RL, Williams JBW. The PHQ-15: validity of a new measure for evaluating the severity of somatic symptoms. *Psychosom Med*. 2002;64(2):258–66.
 64. van Ravesteijn H, Wittkampf K, Lucassen P, van de Lisdonk E, van den Hoogen H, van Weert H, et al. Detecting somatoform disorders in primary care with the PHQ-15. *Ann Fam Med*. 2009;7(3):232–8.
 65. Kroenke K, Spitzer RL, Williams JBW, Löwe B. The patient health questionnaire somatic, anxiety, and depressive symptom scales: a systematic review. *Gen Hosp Psychiatry*. 2010;32(4):345–59.
 66. Ros Montalbán S, Comas Vives A, García-García M. Validation of the Spanish version of the PHQ-15 questionnaire for the evaluation of physical symptoms in patients with depression and/or anxiety disorders: DEPRE-SOMA study. *Actas Españolas Psiquiatr*. 2010;38(6):345–57.
 67. Sheehan DV, Harnett-Sheehan K, Raj BA. The measurement of disability. *Int Clin Psychopharmacol*. 1996;11(Suppl 3):89–95.
 68. Bobes J, Badía X, Luque A, García M, González MP, Dal-Ré R, et al. Validación de las versiones en español de los cuestionarios Liebowitz Social Anxiety Scale, Social Anxiety and Distress Scale y Sheehan Disability Inventory para la evaluación de la fobia social. *Med Clin (Barc)*. 1999;112(14):530–8.

69. Luciano JV, Bertsch J, Salvador-Carulla L, Tomás JM, Fernández A, Pinto-Meza A, et al. Factor structure, internal consistency and construct validity of the Sheehan disability scale in a Spanish primary care sample. *J Eval Clin Pract.* 2010;16(5):895–901.
70. The WHOQOL Group. Development of the World Health Organization WHOQOL-BREF quality of life assessment. *Psychol Med.* 1998;28(3):551–8.
71. The WHOQOL Group. The World Health Organization quality of life assessment (WHOQOL): development and general psychometric properties. *Soc Sci Med.* 1998;46(12):1569–85.
72. Lucas-Carrasco R. The WHO quality of life (WHOQOL) questionnaire: Spanish development and validation studies. *Qual Life Res.* 2012;21:161–5.
73. Rocha NS, Power MJ, Bushnell DM, Fleck MP. Cross-cultural evaluation of the WHOQOL-BREF domains in primary care depressed patients using Rasch analysis. *Med Decis Mak.* 2012;32(1):41–55.
74. Nolen-Hoeksema S, Morrow J. A prospective study of depression and posttraumatic stress symptoms after a natural disaster: the 1989 Loma Prieta earthquake. *J Pers Soc Psychol.* 1991;61(1):115–21.
75. Hervás G. Adaptación al castellano de un instrumento para evaluar el estilo rumiativo: la Escala de Respuestas Rumiativas. *Rev Psicopatología y Psicol Clínica.* 2008;13(2):111–21.
76. Muñoz-Navarro R, Adrián Medrano L, González-Blanch C, Carpallo-González M, Olave L, Iruarrizaga I, et al. Validity of brief scales for assessing Transdiagnostic cognitive emotion regulation strategies in primary care patients with emotional disorders. *Eur J Psychol Assess.* 2021;37(2):86–94.
77. Meyer TJ, Miller ML, Metzger RL, Borkovec TD. Development and validation of the Penn State worry questionnaire. *Behav Res Ther.* 1990;28(6):487–95.
78. Sandín B, Chorot P, Valiente RM, Lostao L. Validación española del cuestionario de preocupación PSWQ: estructura factorial y propiedades psicométricas. *Rev Psicopatología y Psicol Clínica.* 2009;14(2):107–22.
79. Crittendon J, Hopko DR. Assessing worry in older and younger adults: psychometric properties of an abbreviated Penn State worry questionnaire (PSWQ-A). *J Anxiety Disord.* 2006;20(8):1036–54.
80. Cano-Vindel A. Inventory of Cognitive Activity in Anxiety Disorders (IACIA). Unpublished; 2001.
81. Eysenck MW. A cognitive approach to trait anxiety. *Eur J Personal.* 2000;14(5):463–76.
82. Garnefski N, Kraaij V, Spinhoven P. Negative life events, cognitive emotion regulation and emotional problems. *Pers Individ Dif.* 2001;30(8):1311–27.
83. Domínguez-Sánchez FJ, Lasa-Aristu A, Amor PJ, Holgado-Tello FP. Psychometric properties of the Spanish version of the cognitive emotion regulation questionnaire. *Assessment.* 2013;20(2):253–61.
84. Holgado-Tello FP, Amor PJ, Lasa-Aristu A, Domínguez-Sánchez FJ, Delgado B. Two new brief versions of the cognitive emotion regulation questionnaire and its relationships with depression and anxiety. *An Psicol.* 2018;34(3):458–64.
85. Wells A, Cartwright-Hatton S. A short form of the metacognitions questionnaire: properties of the MCQ-30. *Behav Res Ther.* 2004;42(4):385–96.
86. Cartwright-Hatton S, Wells A. Beliefs about worry and intrusions: the Meta-cognitions questionnaire and its correlates. *J Anxiety Disord.* 1997;11(3):279–96.
87. Ramos-Cejudo J, Salguero JM, Cano-Vindel A. Spanish Version of the Meta-Cognitions Questionnaire 30 (MCQ-30). *Span J Psychol.* 2013;16(E95):1–8.
88. The EuroQol Group. EuroQol - a new facility for the measurement of health-related quality of life. *Health Policy (New York).* 1990;16(3):199–208.
89. Badia X, Roset M, Montserrat S, Herdman M, Segura A. The Spanish version of EuroQol: a description and its applications. *European quality of life scale. Med Clin (Barc).* 1999;112(suppl 1):79–85.
90. van Reenen M, Janssen B, Stolk E, Secnik Boye K, Herdman M, Kennedy-Martin M, et al. EQ-5D-5L User Guide: 3.0. EuroQol Research Foundation; 2019. Available from: <https://euroqol.org/publications/user-guides/>
91. Kroenke K, Spitzer RL, Williams JBW, Löwe B. An ultra-brief screening scale for anxiety and depression: the PHQ-4. *Psychosomatics.* 2009;50(6):613–21.
92. Cano-Vindel A, Muñoz-Navarro R, Medrano LA, Ruiz-Rodríguez P, González-Blanch C, Gómez-Castillo MD, et al. A computerized version of the patient health Questionnaire-4 as an ultra-brief screening tool to detect emotional disorders in primary care. *J Affect Disord.* 2018;234:247–55.
93. First MB, Spitzer RL, Gibbon M, Williams JBW. *Entrevista Clínica Estructurada para los Trastornos del Eje I del DSM-IV.* Barcelona: Masson; 1999.
94. Mental Health Division. *Entrevista Diagnóstica Internacional Compuesta (CIDI).* Geneva: World Health Organization; 1997.
95. Gueorguieva R, Krystal JH. Move over ANOVA: progress in analyzing repeated-measures data and its reflection in papers published in the archives of general psychiatry. *Arch Gen Psychiatry.* 2004;61(3):310–7.
96. VIDAL. Vidal Vademecum Spain. Available from: <http://www.vademecum.es/>
97. Servicio Andaluz de Salud. Precios públicos. Available from: <https://www.sspa.juntadeandalucia.es/servicioandaluzdesalud/profesionales/recursos-para-profesionales/precios-publicos>
98. Dirección General de Personal. Resolución 0001/2021. Retribuciones del personal de Centros e Instituciones Sanitarias. Ejercicio 2021. 0001/2021 de Andalucía de Salud; 2021. Available from: <https://www.sspa.junta.deandalucia.es/servicioandaluzdesalud/profesionales/guia-laboral/retribuciones>

Publisher's Note

Springer Nature remains neutral with regard to jurisdictional claims in published maps and institutional affiliations.

Ready to submit your research? Choose BMC and benefit from:

- fast, convenient online submission
- thorough peer review by experienced researchers in your field
- rapid publication on acceptance
- support for research data, including large and complex data types
- gold Open Access which fosters wider collaboration and increased citations
- maximum visibility for your research: over 100M website views per year

At BMC, research is always in progress.

Learn more biomedcentral.com/submissions



Terms and Conditions

Springer Nature journal content, brought to you courtesy of Springer Nature Customer Service Center GmbH (“Springer Nature”).

Springer Nature supports a reasonable amount of sharing of research papers by authors, subscribers and authorised users (“Users”), for small-scale personal, non-commercial use provided that all copyright, trade and service marks and other proprietary notices are maintained. By accessing, sharing, receiving or otherwise using the Springer Nature journal content you agree to these terms of use (“Terms”). For these purposes, Springer Nature considers academic use (by researchers and students) to be non-commercial.

These Terms are supplementary and will apply in addition to any applicable website terms and conditions, a relevant site licence or a personal subscription. These Terms will prevail over any conflict or ambiguity with regards to the relevant terms, a site licence or a personal subscription (to the extent of the conflict or ambiguity only). For Creative Commons-licensed articles, the terms of the Creative Commons license used will apply.

We collect and use personal data to provide access to the Springer Nature journal content. We may also use these personal data internally within ResearchGate and Springer Nature and as agreed share it, in an anonymised way, for purposes of tracking, analysis and reporting. We will not otherwise disclose your personal data outside the ResearchGate or the Springer Nature group of companies unless we have your permission as detailed in the Privacy Policy.

While Users may use the Springer Nature journal content for small scale, personal non-commercial use, it is important to note that Users may not:

1. use such content for the purpose of providing other users with access on a regular or large scale basis or as a means to circumvent access control;
2. use such content where to do so would be considered a criminal or statutory offence in any jurisdiction, or gives rise to civil liability, or is otherwise unlawful;
3. falsely or misleadingly imply or suggest endorsement, approval, sponsorship, or association unless explicitly agreed to by Springer Nature in writing;
4. use bots or other automated methods to access the content or redirect messages
5. override any security feature or exclusionary protocol; or
6. share the content in order to create substitute for Springer Nature products or services or a systematic database of Springer Nature journal content.

In line with the restriction against commercial use, Springer Nature does not permit the creation of a product or service that creates revenue, royalties, rent or income from our content or its inclusion as part of a paid for service or for other commercial gain. Springer Nature journal content cannot be used for inter-library loans and librarians may not upload Springer Nature journal content on a large scale into their, or any other, institutional repository.

These terms of use are reviewed regularly and may be amended at any time. Springer Nature is not obligated to publish any information or content on this website and may remove it or features or functionality at our sole discretion, at any time with or without notice. Springer Nature may revoke this licence to you at any time and remove access to any copies of the Springer Nature journal content which have been saved.

To the fullest extent permitted by law, Springer Nature makes no warranties, representations or guarantees to Users, either express or implied with respect to the Springer nature journal content and all parties disclaim and waive any implied warranties or warranties imposed by law, including merchantability or fitness for any particular purpose.

Please note that these rights do not automatically extend to content, data or other material published by Springer Nature that may be licensed from third parties.

If you would like to use or distribute our Springer Nature journal content to a wider audience or on a regular basis or in any other manner not expressly permitted by these Terms, please contact Springer Nature at

onlineservice@springernature.com